

## ARG63910 anti-DCDC2 antibody

Package: 100 µg  
Store at: -20°C

### Summary

Product Description	Goat Polyclonal antibody recognizes DCDC2
Tested Reactivity	Hu, Ms, Rat
Predict Reactivity	Dog, Pig
Tested Application	IHC-P, WB
Host	Goat
Clonality	Polyclonal
Isotype	IgG
Target Name	DCDC2
Species	Human
Immunogen	C-DGEKANKDAEQKED
Conjugation	Un-conjugated
Alternate Names	RU2S; DCDC2A; DFNB66; Doublecortin domain-containing protein 2; RU2; Protein RU2S; NPHP19

### Application Instructions

Application table	Application	Dilution
	IHC-P	5 - 10 µg/ml
	WB	0.1 - 0.3 µg/ml

**Application Note**  
IHC-P: Antigen Retrieval: Steam tissue section in Citrate buffer (pH 6.0).  
WB: Recommend incubate at RT for 1h.  
\* The dilutions indicate recommended starting dilutions and the optimal dilutions or concentrations should be determined by the scientist.

### Properties

Form	Liquid
Purification	Purified from goat serum by ammonium sulphate precipitation followed by antigen affinity chromatography using the immunizing peptide.
Buffer	Tris saline (pH 7.3), 0.02% Sodium azide and 0.5% BSA
Preservative	0.02% Sodium azide
Stabilizer	0.5% BSA
Concentration	0.5 mg/ml
Storage instruction	For continuous use, store undiluted antibody at 2-8°C for up to a week. For long-term storage, aliquot and store at -20°C or below. Storage in frost free freezers is not recommended. Avoid repeated freeze/thaw cycles. Suggest spin the vial prior to opening. The antibody solution should be gently mixed

before use.

Note

For laboratory research only, not for drug, diagnostic or other use.

## Bioinformation

Database links

[GeneID: 291130 Rat](#)

[GeneID: 51473 Human](#)

[Swiss-port # D3ZR10 Rat](#)

[Swiss-port # Q9UHG0 Human](#)

Background

This gene encodes a member of the doublecortin family. The protein encoded by this gene contains two doublecortin domains. The doublecortin domain has been demonstrated to bind tubulin and enhance microtubule polymerization. Mutations in this gene have been associated with Reading Disability (RD), also referred to as developmental dyslexia. Alternatively spliced transcript variants encoding the same protein have been found for this gene.[provided by RefSeq, Sep 2010]

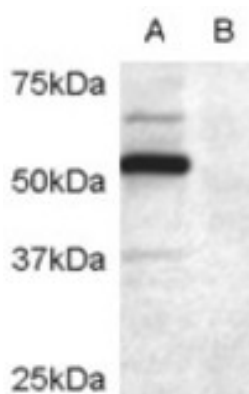
Research Area

Neuroscience antibody; Signaling Transduction antibody

Calculated Mw

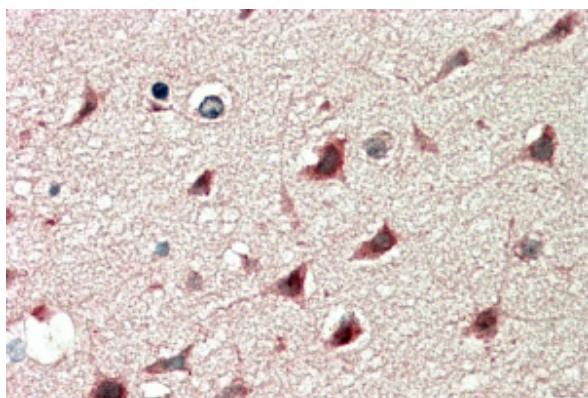
53 kDa

## Images



ARG63910 anti-DCDC2 antibody WB image

Western Blot: COS7 cell lysate transfected with full length recombinant human DCDC2 (A) and untransfected control COS7 cells (B) stained with ARG63910 anti-DCDC2 antibody at 0.2  $\mu\text{g}/\text{ml}$  dilution.



ARG63910 anti-DCDC2 antibody IHC-P image

Immunohistochemistry: paraffin embedded Human Cerebral Cortex. (Steamed antigen retrieval with citrate buffer pH 6) stained with ARG63910 anti-DCDC2 antibody at 5  $\mu\text{g}/\text{ml}$  dilution followed by AP-staining.