

## ARG63909 anti-CD14 antibody

Package: 100 µg  
Store at: -20°C

### Summary

Product Description	Goat Polyclonal antibody recognizes CD14
Tested Reactivity	Hu
Tested Application	WB
Host	Goat
Clonality	Polyclonal
Isotype	IgG
Target Name	CD14
Species	Human
Immunogen	C-KRVDADADPRQYAD
Conjugation	Un-conjugated
Alternate Names	CD antigen CD14; Myeloid cell-specific leucine-rich glycoprotein; Monocyte differentiation antigen CD14

### Application Instructions

Application table	Application	Dilution
	WB	1 - 3 µg/ml

**Application Note** WB: Recommend incubate at RT for 1h.  
\* The dilutions indicate recommended starting dilutions and the optimal dilutions or concentrations should be determined by the scientist.

### Properties

Form	Liquid
Purification	Purified from goat serum by ammonium sulphate precipitation followed by antigen affinity chromatography using the immunizing peptide.
Buffer	Tris saline (pH 7.3), 0.02% Sodium azide and 0.5% BSA
Preservative	0.02% Sodium azide
Stabilizer	0.5% BSA
Concentration	0.5 mg/ml
Storage instruction	For continuous use, store undiluted antibody at 2-8°C for up to a week. For long-term storage, aliquot and store at -20°C or below. Storage in frost free freezers is not recommended. Avoid repeated freeze/thaw cycles. Suggest spin the vial prior to opening. The antibody solution should be gently mixed before use.
Note	For laboratory research only, not for drug, diagnostic or other use.

## Bioinformation

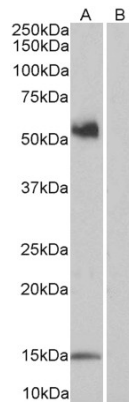
Database links	<a href="#">GeneID: 929 Human</a> <a href="#">Swiss-port # P08571 Human</a>
Background	The protein encoded by this gene is a surface antigen that is preferentially expressed on monocytes/macrophages. It cooperates with other proteins to mediate the innate immune response to bacterial lipopolysaccharide. Alternative splicing results in multiple transcript variants encoding the same protein. [provided by RefSeq, Mar 2010]
Research Area	Developmental Biology antibody; Immune System antibody; General Lymphocyte Marker Study antibody; Macrophages and neutrophils antibody
Calculated Mw	40 kDa
PTM	N- and O- glycosylated. O-glycosylated with a core 1 or possibly core 8 glycan.

## Images



ARG63909 anti-CD14 antibody WB image

Western Blot: Human Lymph Node lysate (35 µg protein in RIPA buffer) stained with ARG63909 anti-CD14 antibody at 1 µg/ml dilution.



ARG63909 anti-CD14 antibody WB image

Western blot: 35 µg of peripheral blood mononucleocyte lysates (in RIPA buffer) with (B) and without (A) blocking peptide. The blots were stained with ARG63909 anti-CD14 antibody at 1 µg/ml dilution and incubated at RT for 1 hour.