

ARG63901
anti-GEF5 antibodyPackage: 100 µg
Store at: -20°C

Summary

Product Description	Goat Polyclonal antibody recognizes GEF5
Tested Reactivity	Hu
Tested Application	IHC-P, WB
Host	Goat
Clonality	Polyclonal
Isotype	IgG
Target Name	GEF5
Species	Human
Immunogen	C-DKEIDQNSQQEE
Conjugation	Un-conjugated
Alternate Names	P60; TIM1; Oncogene TIM; Rho guanine nucleotide exchange factor 5; TIM; GEF5; Ephexin-3; p60 TIM; Transforming immortalized mammary oncogene; Guanine nucleotide regulatory protein TIM

Application Instructions

Application table	Application	Dilution
	IHC-P	3 - 5 µg/ml
	WB	0.1 - 0.3 µg/ml

Application Note

WB: Recommend incubate at RT for 1h.
IHC-P: Antigen Retrieval: Steam tissue section in Citrate buffer (pH 6.0).
* The dilutions indicate recommended starting dilutions and the optimal dilutions or concentrations should be determined by the scientist.

Properties

Form	Liquid
Purification	Purified from goat serum by ammonium sulphate precipitation followed by antigen affinity chromatography using the immunizing peptide.
Buffer	Tris saline (pH 7.3), 0.02% Sodium azide and 0.5% BSA
Preservative	0.02% Sodium azide
Stabilizer	0.5% BSA
Concentration	0.5 mg/ml
Storage instruction	For continuous use, store undiluted antibody at 2-8°C for up to a week. For long-term storage, aliquot and store at -20°C or below. Storage in frost free freezers is not recommended. Avoid repeated freeze/thaw cycles. Suggest spin the vial prior to opening. The antibody solution should be gently mixed before use.

Note For laboratory research only, not for drug, diagnostic or other use.

Bioinformation

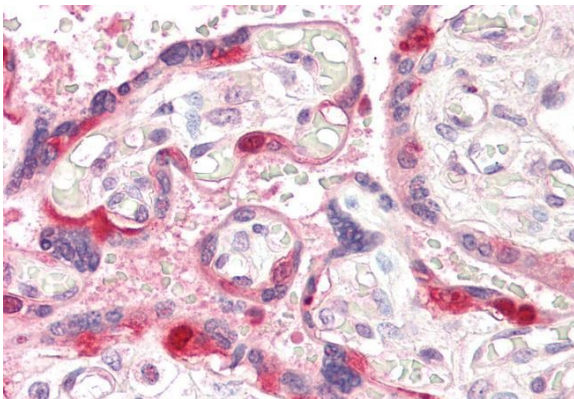
Database links	GeneID: 7984 Human Swiss-port # Q12774 Human
Background	Rho GTPases play a fundamental role in numerous cellular processes initiated by extracellular stimuli that work through G protein coupled receptors. The encoded protein may form a complex with G proteins and stimulate Rho-dependent signals. This protein may be involved in the control of cytoskeletal organization. [provided by RefSeq, Jul 2008]
Research Area	Signaling Transduction antibody
Calculated Mw	177 kDa
PTM	Activation of SRC induces tyrosine phosphorylation of ARHGEF5.

Images



ARG63901 anti-GEF5 antibody WB image

Western Blot: HeLa Lysate (35 µg protein in RIPA buffer) stained with ARG63901 anti-GEF5 antibody at 0.1 µg/ml dilution.



ARG63901 anti-GEF5 antibody IHC-P image

Immunohistochemistry: Paraffin-embedded Human placenta tissue. Antigen Retrieval: Steam tissue section in Citrate buffer (pH 6.0). The tissue section was stained with ARG63901 anti-GEF5 antibody at 3.75 µg/ml dilution followed by AP-staining.