

ARG63848 anti-Klotho antibody

Package: 100 µg
Store at: -20°C

Summary

Product Description	Goat Polyclonal antibody recognizes Klotho
Tested Reactivity	Hu
Predict Reactivity	Ms, Rat
Tested Application	IHC-P
Specificity	This antibody is expected to recognise both reported isoforms (NP_004786.2; NP_710150.1).
Host	Goat
Clonality	Polyclonal
Isotype	IgG
Target Name	Klotho
Species	Human
Immunogen	C-KRDDAKYMYLKK
Conjugation	Un-conjugated
Alternate Names	Klotho; EC 3.2.1.31

Application Instructions

Application table	Application	Dilution
	IHC-P	4 - 6 µg/ml

Application Note IHC-P: Antigen Retrieval: Steam tissue section in Citrate buffer (pH 6.0).
* The dilutions indicate recommended starting dilutions and the optimal dilutions or concentrations should be determined by the scientist.

Properties

Form	Liquid
Purification	Purified from goat serum by ammonium sulphate precipitation followed by antigen affinity chromatography using the immunizing peptide.
Buffer	Tris saline (pH 7.3), 0.02% Sodium azide and 0.5% BSA
Preservative	0.02% Sodium azide
Stabilizer	0.5% BSA
Concentration	0.5 mg/ml
Storage instruction	For continuous use, store undiluted antibody at 2-8°C for up to a week. For long-term storage, aliquot and store at -20°C or below. Storage in frost free freezers is not recommended. Avoid repeated freeze/thaw cycles. Suggest spin the vial prior to opening. The antibody solution should be gently mixed before use.

Note For laboratory research only, not for drug, diagnostic or other use.

Bioinformation

Database links [GeneID: 9365 Human](#)

[Swiss-port # Q9UEF7 Human](#)

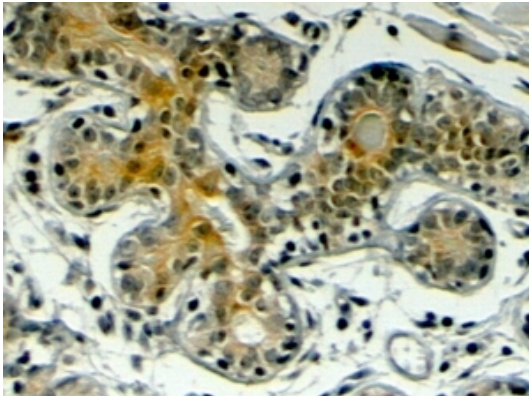
Background This gene encodes a type-I membrane protein that is related to beta-glucosidases. Reduced production of this protein has been observed in patients with chronic renal failure (CRF), and this may be one of the factors underlying the degenerative processes (e.g., arteriosclerosis, osteoporosis, and skin atrophy) seen in CRF. Also, mutations within this protein have been associated with ageing and bone loss. [provided by RefSeq, Jul 2008]

Research Area Developmental Biology antibody; Metabolism antibody; Signaling Transduction antibody

Calculated Mw 116 kDa

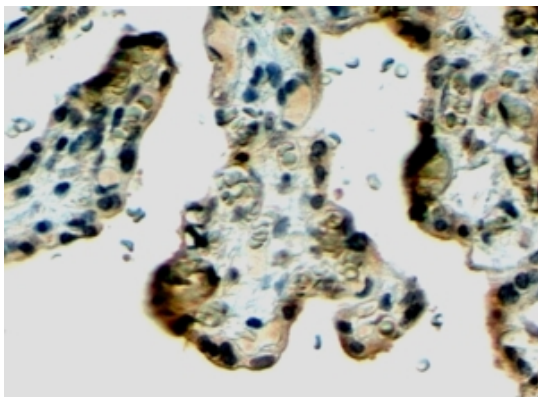
PTM N-glycosylated.

Images



ARG63848 anti-Klotho antibody IHC-P image

Immunohistochemistry: paraffin embedded Human Breast. (Steamed antigen retrieval with citrate buffer pH 6) stained with ARG63848 anti-Klotho antibody at 4 µg/ml dilution followed by HRP-staining.



ARG63848 anti-Klotho antibody IHC-P image

Immunohistochemistry: paraffin embedded Human Placenta. (Steamed antigen retrieval with citrate buffer pH 6) stained with ARG63848 anti-Klotho antibody at 4 µg/ml dilution followed by HRP-staining.