

ARG63844 anti-TPH2 antibody

Package: 100 µg
Store at: -20°C

Summary

Product Description	Goat Polyclonal antibody recognizes TPH2
Tested Reactivity	Hu, Ms
Predict Reactivity	Cow, Dog, Pig
Tested Application	ICC/IF, IHC-P
Host	Goat
Clonality	Polyclonal
Isotype	IgG
Target Name	TPH2
Species	Human
Immunogen	C-NKPNSGKNDDKGNK
Conjugation	Un-conjugated
Alternate Names	Tryptophan 5-hydroxylase 2; ADHD7; NTPH; Neuronal tryptophan hydroxylase; Tryptophan 5-monoxygenase 2; EC 1.14.16.4

Application Instructions

Application table	Application	Dilution
	ICC/IF	Assay - dependent
	IHC-P	4 - 6 µg/ml
Application Note	IHC-P: Antigen Retrieval: Steam tissue section in Citrate buffer (pH 6.0). * The dilutions indicate recommended starting dilutions and the optimal dilutions or concentrations should be determined by the scientist.	

Properties

Form	Liquid
Purification	Purified from goat serum by ammonium sulphate precipitation followed by antigen affinity chromatography using the immunizing peptide.
Buffer	Tris saline (pH 7.3), 0.02% Sodium azide and 0.5% BSA
Preservative	0.02% Sodium azide
Stabilizer	0.5% BSA
Concentration	0.5 mg/ml
Storage instruction	For continuous use, store undiluted antibody at 2-8°C for up to a week. For long-term storage, aliquot and store at -20°C or below. Storage in frost free freezers is not recommended. Avoid repeated freeze/thaw cycles. Suggest spin the vial prior to opening. The antibody solution should be gently mixed

before use.

Note

For laboratory research only, not for drug, diagnostic or other use.

Bioinformation

Database links

[GeneID: 121278 Human](#)

[GeneID: 216343 Mouse](#)

[Swiss-port # Q8CGV2 Mouse](#)

[Swiss-port # Q8IWU9 Human](#)

Background

This gene encodes a member of the pterin-dependent aromatic acid hydroxylase family. The encoded protein catalyzes the first and rate limiting step in the biosynthesis of serotonin, an important hormone and neurotransmitter. The human genome contains two related tryptophan hydroxylases, one on chromosome 11p15-p14 and one on chromosome 12q21. This gene is expressed predominantly in the brain stem. Mutations in this gene may be associated with psychiatric diseases such as bipolar affective disorder and major depression. [provided by RefSeq, Jul 2008]

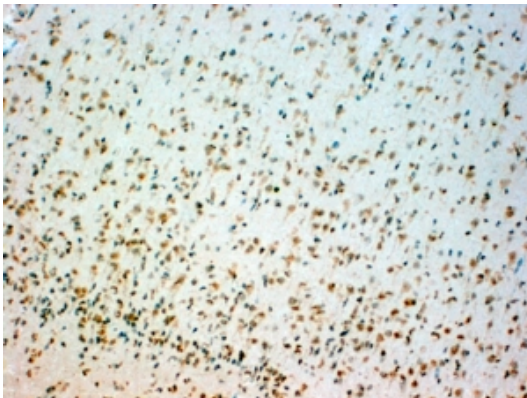
Research Area

Neuroscience antibody

Calculated Mw

56 kDa

Images



ARG63844 anti-TPH2 antibody IHC-P image

Immunohistochemistry: Paraffin embedded Human Brain Stem. (Steamed antigen retrieval with citrate buffer pH 6) stained with ARG63844 anti-TPH2 antibody at 4 µg/ml dilution followed by HRP-staining.