

ARG63840 anti-VPS11 antibody

Package: 100 µg
Store at: -20°C

Summary

Product Description	Goat Polyclonal antibody recognizes VPS11
Tested Reactivity	Hu
Predict Reactivity	Ms, Rat, Cow, Dog
Tested Application	IHC-P
Host	Goat
Clonality	Polyclonal
Isotype	IgG
Target Name	VPS11
Species	Human
Immunogen	C-HALQEKDTQTKLE
Conjugation	Un-conjugated
Alternate Names	END1; Vacuolar protein sorting-associated protein 11 homolog; hVPS11; RING finger protein 108; PEP5; RNF108

Application Instructions

Application table	Application	Dilution
	IHC-P	3 - 6 µg/ml

Application Note
IHC-P: Antigen Retrieval: Steam tissue section in Citrate buffer (pH 6.0).
* The dilutions indicate recommended starting dilutions and the optimal dilutions or concentrations should be determined by the scientist.

Properties

Form	Liquid
Purification	Purified from goat serum by ammonium sulphate precipitation followed by antigen affinity chromatography using the immunizing peptide.
Buffer	Tris saline (pH 7.3), 0.02% Sodium azide and 0.5% BSA
Preservative	0.02% Sodium azide
Stabilizer	0.5% BSA
Concentration	0.5 mg/ml
Storage instruction	For continuous use, store undiluted antibody at 2-8°C for up to a week. For long-term storage, aliquot and store at -20°C or below. Storage in frost free freezers is not recommended. Avoid repeated freeze/thaw cycles. Suggest spin the vial prior to opening. The antibody solution should be gently mixed before use.

Note

For laboratory research only, not for drug, diagnostic or other use.

Bioinformation

Database links

[GeneID: 55823 Human](#)

[Swiss-port # Q9H270 Human](#)

Background

Vesicle mediated protein sorting plays an important role in segregation of intracellular molecules into distinct organelles. Genetic studies in yeast have identified more than 40 vacuolar protein sorting (VPS) genes involved in vesicle transport to vacuoles. This gene encodes the human homolog of yeast class C Vps11 protein. The mammalian class C Vps proteins are predominantly associated with late endosomes/lysosomes, and like their yeast counterparts, may mediate vesicle trafficking steps in the endosome/lysosome pathway. [provided by RefSeq, Jul 2008]

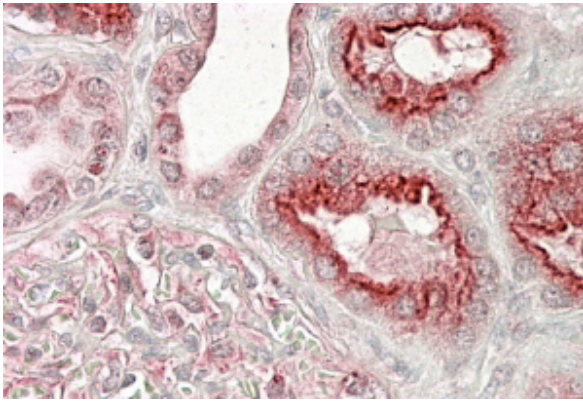
Research Area

Signaling Transduction antibody

Calculated Mw

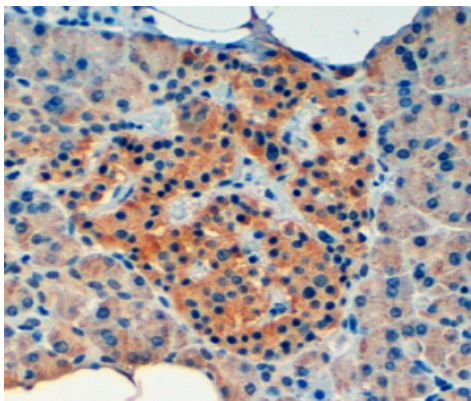
108 kDa

Images



ARG63840 anti-VPS11 antibody IHC-P image

Immunohistochemistry: paraffin embedded Human Kidney-. (Steamed antigen retrieval with citrate buffer pH 6) stained with ARG63840 anti-VPS11 antibody at 3.8 µg/ml dilution followed by AP-staining.



ARG63840 anti-VPS11 antibody IHC-P image

Immunohistochemistry: paraffin embedded Human Pancreas. (Steamed antigen retrieval with Tris/EDTA buffer pH 9) stained with ARG63840 anti-VPS11 antibody at 4 µg/ml dilution followed by HRP-staining.