

ARG63819 anti-TGIF2 antibody

Package: 100 µg
Store at: -20°C

Summary

Product Description	Goat Polyclonal antibody recognizes TGIF2
Tested Reactivity	Hu
Predict Reactivity	Ms, Rat, Dog, Pig
Tested Application	WB
Host	Goat
Clonality	Polyclonal
Isotype	IgG
Target Name	TGIF2
Species	Human
Immunogen	C-EMELQKQQDP
Conjugation	Un-conjugated
Alternate Names	Homeobox protein TGIF2; TGFB-induced factor 2; 5'-TG-3'-interacting factor 2; TGF-beta-induced transcription factor 2

Application Instructions

Application table	Application	Dilution
	WB	0.3 - 1.0 µg/ml

Application Note
WB: Recommend incubate at RT for 1h.
* The dilutions indicate recommended starting dilutions and the optimal dilutions or concentrations should be determined by the scientist.

Properties

Form	Liquid
Purification	Purified from goat serum by ammonium sulphate precipitation followed by antigen affinity chromatography using the immunizing peptide.
Buffer	Tris saline (pH 7.3), 0.02% Sodium azide and 0.5% BSA
Preservative	0.02% Sodium azide
Stabilizer	0.5% BSA
Concentration	0.5 mg/ml
Storage instruction	For continuous use, store undiluted antibody at 2-8°C for up to a week. For long-term storage, aliquot and store at -20°C or below. Storage in frost free freezers is not recommended. Avoid repeated freeze/thaw cycles. Suggest spin the vial prior to opening. The antibody solution should be gently mixed before use.

Note For laboratory research only, not for drug, diagnostic or other use.

Bioinformation

Database links [GeneID: 60436 Human](#)

[Swiss-port # Q9GZN2 Human](#)

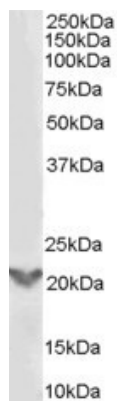
Background The protein encoded by this gene is a DNA-binding homeobox protein and a transcriptional repressor, which appears to repress transcription by recruiting histone deacetylases to TGF beta-responsive genes. This gene is amplified and over-expressed in some ovarian cancers. Alternative splicing results in multiple transcript variants. A related pseudogene has been identified on chromosome 1. Read-through transcription also exists between this gene and the neighboring downstream C20orf24 (chromosome 20 open reading frame 24) gene. [provided by RefSeq, Dec 2010]

Research Area Cancer antibody; Gene Regulation antibody

Calculated Mw 26 kDa

PTM The C-terminal part is phosphorylated in response to EGF signaling by the Ras/MAPK pathway.

Images



ARG63819 anti-TGIF2 antibody WB image

Western Blot: A431 lysate (35 µg protein in RIPA buffer) stained with ARG63819 anti-TGF beta induced factor 2 antibody at 0.3 µg/ml dilution.