

ARG63817 anti-Rhophilin 2 antibody

Package: 100 µg
Store at: -20°C

Summary

Product Description	Goat Polyclonal antibody recognizes Rhophilin 2
Tested Reactivity	Hu
Predict Reactivity	Ms, Rat, Cow
Tested Application	IHC-P
Host	Goat
Clonality	Polyclonal
Isotype	IgG
Target Name	Rhophilin 2
Species	Human
Immunogen	C-TNKNRQKSAST
Conjugation	Un-conjugated
Alternate Names	Rhophilin-2; RHOBP; GTP-Rho-binding protein 2; 76 kDa RhoB effector protein; p76RBE; P76RBE

Application Instructions

Application table	Application	Dilution
	IHC-P	5 - 10 µg/ml

Application Note
IHC-P: Antigen Retrieval: Steam tissue section in Citrate buffer (pH 6.0).
* The dilutions indicate recommended starting dilutions and the optimal dilutions or concentrations should be determined by the scientist.

Properties

Form	Liquid
Purification	Purified from goat serum by ammonium sulphate precipitation followed by antigen affinity chromatography using the immunizing peptide.
Buffer	Tris saline (pH 7.3), 0.02% Sodium azide and 0.5% BSA
Preservative	0.02% Sodium azide
Stabilizer	0.5% BSA
Concentration	0.5 mg/ml
Storage instruction	For continuous use, store undiluted antibody at 2-8°C for up to a week. For long-term storage, aliquot and store at -20°C or below. Storage in frost free freezers is not recommended. Avoid repeated freeze/thaw cycles. Suggest spin the vial prior to opening. The antibody solution should be gently mixed before use.
Note	For laboratory research only, not for drug, diagnostic or other use.

Bioinformation

Database links [GeneID: 85415 Human](#)

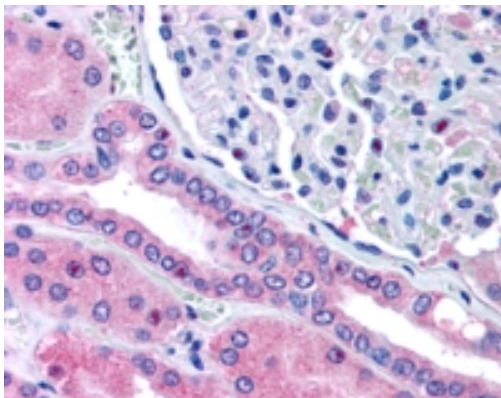
[Swiss-port # Q8IUC4 Human](#)

Background This gene encodes a member of the raphilin family of Ras-homologous (Rho)-GTPase binding proteins. The encoded protein binds both GTP- and GDP-bound RhoA and GTP-bound RhoB and may be involved in the organization of the actin cytoskeleton. [provided by RefSeq, Apr 2009]

Research Area Signaling Transduction antibody

Calculated Mw 77 kDa

Images



ARG63817 anti-Rhopilin 2 antibody IHC-P image

Immunohistochemistry: paraffin embedded Human Kidney. (Steamed antigen retrieval with citrate buffer pH 6) stained with ARG63817 anti-Rhopilin 2 antibody at 5 μ g/ml dilution followed by AP-staining.