

ARG63807 anti-ERLIN2 / SPFH2 antibody

Package: 100 µg
Store at: -20°C

Summary

Product Description	Goat Polyclonal antibody recognizes ERLIN2 / SPFH2
Tested Reactivity	Hu
Predict Reactivity	Rat
Tested Application	IHC-P, WB
Specificity	This antibody is expected to recognise isoform 1 (NP_009106) only.
Host	Goat
Clonality	Polyclonal
Isotype	IgG
Target Name	ERLIN2 / SPFH2
Species	Human
Immunogen	C-EDEPLETATKEN
Conjugation	Un-conjugated
Alternate Names	C8orf2; SPFH2; Endoplasmic reticulum lipid raft-associated protein 2; Erlin-2; SPG18; SPFH domain-containing protein 2; Stomatin-prohibitin-flotillin-HflC/K domain-containing protein 2; NET32

Application Instructions

Application table	Application	Dilution
	IHC-P	3 - 5 µg/ml
	WB	0.3 - 1 µg/ml
Application Note	WB: Recommend incubate at RT for 1h. IHC-P: Antigen Retrieval: Steam tissue section in Citrate buffer (pH 6.0). * The dilutions indicate recommended starting dilutions and the optimal dilutions or concentrations should be determined by the scientist.	

Properties

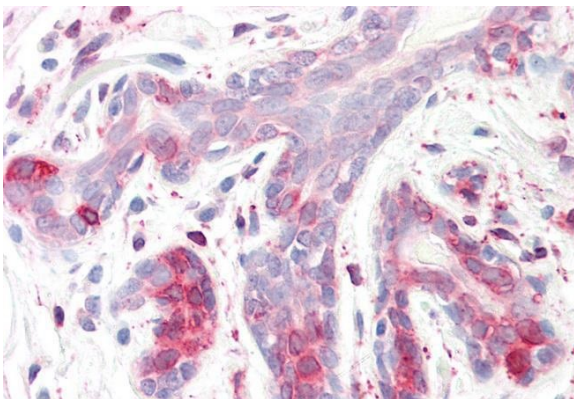
Form	Liquid
Purification	Purified from goat serum by ammonium sulphate precipitation followed by antigen affinity chromatography using the immunizing peptide.
Buffer	Tris saline (pH 7.3), 0.02% Sodium azide and 0.5% BSA
Preservative	0.02% Sodium azide
Stabilizer	0.5% BSA
Concentration	0.5 mg/ml

Storage instruction	For continuous use, store undiluted antibody at 2-8°C for up to a week. For long-term storage, aliquot and store at -20°C or below. Storage in frost free freezers is not recommended. Avoid repeated freeze/thaw cycles. Suggest spin the vial prior to opening. The antibody solution should be gently mixed before use.
Note	For laboratory research only, not for drug, diagnostic or other use.

Bioinformation

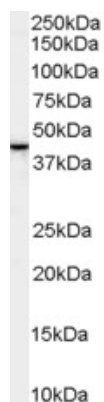
Database links	GeneID: 11160 Human Swiss-port # O94905 Human
Background	This gene encodes a member of the SPFH domain-containing family of lipid raft-associated proteins. The encoded protein is localized to lipid rafts of the endoplasmic reticulum and plays a critical role in inositol 1,4,5-trisphosphate (IP3) signaling by mediating ER-associated degradation of activated IP3 receptors. Mutations in this gene are a cause of spastic paraplegia-18 (SPG18). Alternatively spliced transcript variants encoding multiple isoforms have been observed for this gene. [provided by RefSeq, Feb 2012]
Research Area	Neuroscience antibody; Signaling Transduction antibody
Calculated Mw	38 kDa

Images



ARG63807 anti-ERLIN2 / SPFH2 antibody IHC-P image

Immunohistochemistry: Paraffin-embedded Human breast tissue. Antigen Retrieval: Steam tissue section in Citrate buffer (pH 6.0). The tissue section was stained with ARG63807 anti-ERLIN2 / SPFH2 antibody at 3.75 µg/ml dilution followed by AP-staining.



ARG63807 anti-ERLIN2 / SPFH2 antibody WB image

Western blot: 30 µg of Human breast lysate (in RIPA buffer) stained with ARG63807 anti-ERLIN2 / SPFH2 antibody at 1 µg/ml dilution and incubated at RT for 1 hour.