

## ARG63791 anti-MEPI / SERPINI2 antibody

Package: 100 µg  
Store at: -20°C

### Summary

Product Description	Goat Polyclonal antibody recognizes MEPI / SERPINI2
Tested Reactivity	Hu
Predict Reactivity	Ms, Rat, Dog
Tested Application	IHC-P, WB
Specificity	This antibody is expected to recognise both reported isoforms (NP_006208.1; NP_001012303.1).
Host	Goat
Clonality	Polyclonal
Isotype	IgG
Target Name	MEPI / SERPINI2
Species	Human
Immunogen	C-KGDWKQKFRKEDTQ
Conjugation	Un-conjugated
Alternate Names	TSA2004; Myoepithelium-derived serine protease inhibitor; Peptidase inhibitor 14; Serpin I2; PANCPIN; MEPI; Pancpin; PI-14; Pancreas-specific protein TSA2004; PI14

### Application Instructions

Application table	Application	Dilution
	IHC-P	3 µg/ml
	WB	0.3 - 1 µg/ml
Application Note	IHC-P: Antigen Retrieval: Microwaved tissue section in Citrate buffer (pH 6.0). WB: Recommend incubate at RT for 1h. * The dilutions indicate recommended starting dilutions and the optimal dilutions or concentrations should be determined by the scientist.	

### Properties

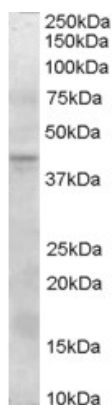
Form	Liquid
Purification	Purified from goat serum by ammonium sulphate precipitation followed by antigen affinity chromatography using the immunizing peptide.
Buffer	Tris saline (pH 7.3), 0.02% Sodium azide and 0.5% BSA
Preservative	0.02% Sodium azide
Stabilizer	0.5% BSA
Concentration	0.5 mg/ml

Storage instruction	For continuous use, store undiluted antibody at 2-8°C for up to a week. For long-term storage, aliquot and store at -20°C or below. Storage in frost free freezers is not recommended. Avoid repeated freeze/thaw cycles. Suggest spin the vial prior to opening. The antibody solution should be gently mixed before use.
Note	For laboratory research only, not for drug, diagnostic or other use.

## Bioinformation

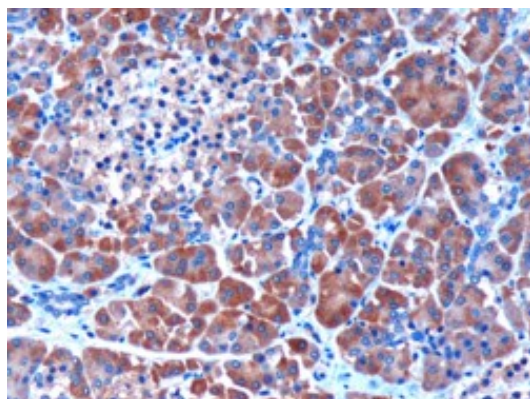
Database links	<a href="#">GeneID: 5276 Human</a> <a href="#">Swiss-port # O75830 Human</a>
Background	The protein encoded by this gene is a member of the serine protease inhibitor (serpin) superfamily made up of proteins which play central roles in the regulation of a wide variety of physiological processes, including coagulation, fibrinolysis, development, malignancy and inflammation. The gene product may have a role in a growth-control, possibly growth-suppressing pathway and, when impaired, may be involved in pancreatic carcinogenesis. The protein is a member of the plasminogen activator inhibitor-1 family, a subset of the serpin superfamily whose members act as tissue-specific tPA inhibitors. Two alternatively spliced transcript variants encoding distinct protein isoforms have been found for this gene. [provided by RefSeq, Jul 2008]
Research Area	Cell Biology and Cellular Response antibody
Calculated Mw	46 kDa

## Images



ARG63791 anti-MEPI / SERPINI2 antibody WB image

Western Blot: Human Pancreas lysate (35 µg protein in RIPA buffer) stained with ARG63791 anti-MEPI / SERPINI2 antibody at 0.3 µg/ml dilution.



ARG63791 anti-MEPI / SERPINI2 antibody IHC-P image

Immunohistochemistry: paraffin embedded Human Pancreas. (Microwaved antigen retrieval with citrate buffer pH 6) stained with ARG63791 anti-MEPI / SERPINI2 antibody at 3 µg/ml dilution followed by HRP-staining