

ARG63788 anti-PPY / Pancreatic Polypeptide antibody

Package: 100 µg
Store at: -20°C

Summary

Product Description	Goat Polyclonal antibody recognizes PPY / Pancreatic Polypeptide
Tested Reactivity	Hu, Rat
Predict Reactivity	Ms, Dog
Tested Application	FACS, ICC/IF, IHC-P, WB
Host	Goat
Clonality	Polyclonal
Isotype	IgG
Target Name	PPY / Pancreatic Polypeptide
Species	Human
Immunogen	C-TRPRYGKRHKEDT
Conjugation	Un-conjugated
Alternate Names	PP; Obinepitide; Pancreatic polypeptide; PNP; Pancreatic prohormone; PI; PH

Application Instructions

Application table	Application	Dilution
	FACS	10 µg/ml
	ICC/IF	Assay - dependent
	IHC-P	3 - 5 µg/ml
	WB	Assay - dependent

Application Note IHC-P: Antigen Retrieval: Steam tissue section in Citrate buffer (pH 6.0) or microwave tissue section in Tris/EDTA buffer (pH 9.0).
* The dilutions indicate recommended starting dilutions and the optimal dilutions or concentrations should be determined by the scientist.

Properties

Form	Liquid
Purification	Purified from goat serum by antigen affinity chromatography.
Buffer	Tris saline (pH 7.3), 0.02% Sodium azide and 0.5% BSA.
Preservative	0.02% Sodium azide
Stabilizer	0.5% BSA
Concentration	0.5 mg/ml

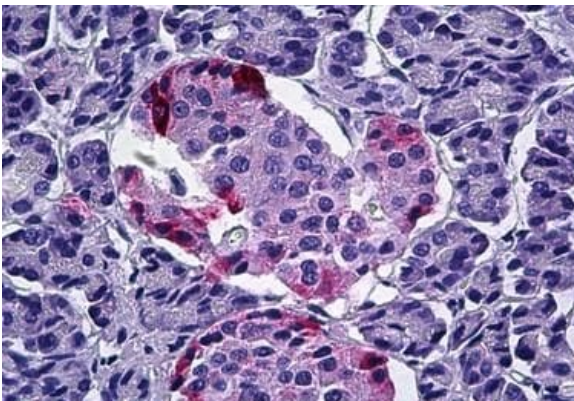
Storage instruction	For continuous use, store undiluted antibody at 2-8°C for up to a week. For long-term storage, aliquot and store at -20°C or below. Storage in frost free freezers is not recommended. Avoid repeated freeze/thaw cycles. Suggest spin the vial prior to opening. The antibody solution should be gently mixed before use.
Note	For laboratory research only, not for drug, diagnostic or other use.

Bioinformation

Database links	GeneID: 24677 Rat
	GeneID: 5539 Human
	Swiss-port # P01298 Human
	Swiss-port # P06303 Rat

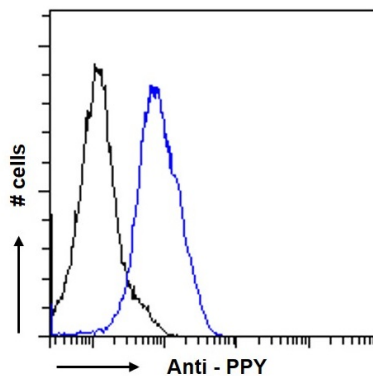
Background	This gene belongs to the NPY family and it encodes a protein that is synthesized as a 95 aa polypeptide precursor in the pancreatic islets of Langerhans. It is cleaved into two peptide products; the active hormone of 36 aa and an icosapeptide of unknown function. The hormone acts as a regulator of pancreatic and gastrointestinal functions and may be important in the regulation of food intake. Plasma level of this hormone has been shown to be reduced in conditions associated with increased food intake and elevated in anorexia nervosa. In addition, infusion of this hormone in obese rodents has shown to decrease weight gain. [provided by RefSeq, Jul 2008]
Research Area	Signaling Transduction antibody
Calculated Mw	10 kDa

Images



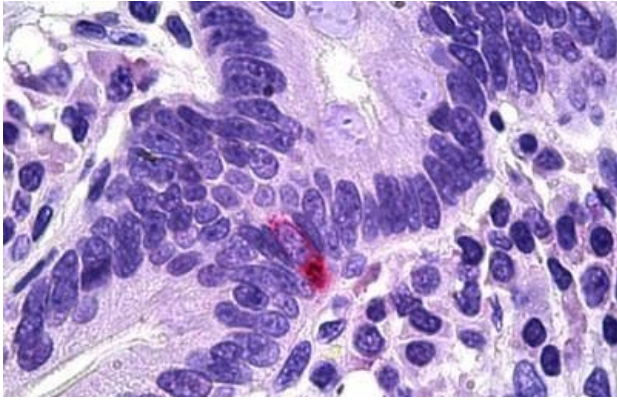
ARG63788 anti-PPY / Pancreatic Polypeptide antibody IHC-P image

Immunohistochemistry: Paraffin-embedded Human pancreas tissue. Antigen Retrieval: Steam tissue section in Citrate buffer (pH 6.0). The tissue section was stained with ARG63788 anti-PPY / Pancreatic Polypeptide antibody at 5 µg/ml dilution followed by AP-staining.



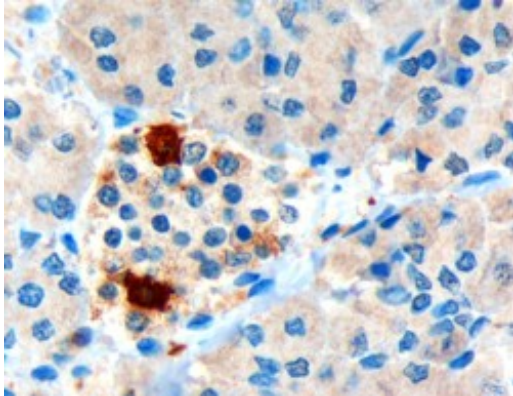
ARG63788 anti-PPY / Pancreatic Polypeptide antibody FACS image

Flow Cytometry: Paraformaldehyde-fixed U2OS cells permeabilized with 0.5% Triton. Cells were stained with ARG63788 anti-PPY / Pancreatic Polypeptide antibody (blue line) at 10 µg/ml for 1 hour, followed by incubation with Alexa Fluor® 488 labelled secondary antibody. IgG control: Unimmunized Goat IgG (black line), followed by incubation with Alexa Fluor® 488 labelled secondary antibody.



ARG63788 anti-PPY / Pancreatic Polypeptide antibody IHC-P image

Immunohistochemistry: Paraffin-embedded Human intestine tissue. Antigen Retrieval: Steam tissue section in Citrate buffer (pH 6.0). The tissue section was stained with ARG63788 anti-PPY / Pancreatic Polypeptide antibody at 5 μ g/ml dilution followed by AP-staining.



ARG63788 anti-PPY / Pancreatic Polypeptide antibody IHC-P image

Immunohistochemistry: Paraffin embedded Human pancreas tissue. Antigen Retrieval: Microwaved tissue section in Tris/EDTA buffer (pH 9.0). The tissue section was stained with ARG63788 anti-PPY / Pancreatic Polypeptide antibody at 3 μ g/ml dilution followed by HRP-staining.
