

ARG63757 anti-Renalase antibody

Package: 100 µg
Store at: -20°C

Summary

Product Description	Goat Polyclonal antibody recognizes Renalase
Tested Reactivity	Hu, Ms, Rat
Predict Reactivity	Cow, Dog
Tested Application	WB
Specificity	This antibody is expected to recognise both reported isoforms (NP_001026879.2 and NP_060833.1).
Host	Goat
Clonality	Polyclonal
Isotype	IgG
Target Name	Renalase
Species	Human
Immunogen	C-VSIDNKKRNI
Conjugation	Un-conjugated
Alternate Names	alpha-NAD; MAO-C; Monoamine oxidase-C; EC 1.6.3.5; RENALASE; P; C10orf59; Renalase

Application Instructions

Application table	Application	Dilution
	WB	1 - 3 µg/ml

Application Note WB: Recommend incubate at RT for 1h.
* The dilutions indicate recommended starting dilutions and the optimal dilutions or concentrations should be determined by the scientist.

Properties

Form	Liquid
Purification	Purified from goat serum by ammonium sulphate precipitation followed by antigen affinity chromatography using the immunizing peptide.
Buffer	Tris saline (pH 7.3), 0.02% Sodium azide and 0.5% BSA
Preservative	0.02% Sodium azide
Stabilizer	0.5% BSA
Concentration	0.5 mg/ml
Storage instruction	For continuous use, store undiluted antibody at 2-8°C for up to a week. For long-term storage, aliquot and store at -20°C or below. Storage in frost free freezers is not recommended. Avoid repeated freeze/thaw cycles. Suggest spin the vial prior to opening. The antibody solution should be gently mixed before use.

Note

For laboratory research only, not for drug, diagnostic or other use.

Bioinformation

Background

Renalase is a flavin adenine dinucleotide-dependent amine oxidase that is secreted into the blood from the kidney (Xu et al., 2005 [PubMed 15841207]).[supplied by OMIM, Mar 2008]

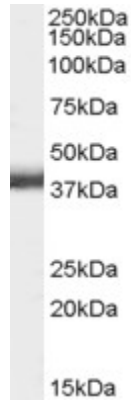
Research Area

Cell Biology and Cellular Response antibody; Neuroscience antibody

Calculated Mw

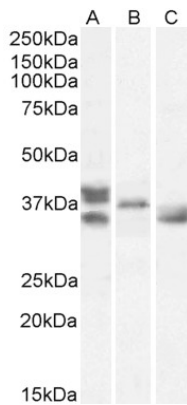
38 kDa

Images



ARG63757 anti-Renalase antibody WB image

Western Blot: Mouse Kidney lysate (35 μ g protein in RIPA buffer) stained with ARG63757 anti-Renalase (aa 224 to 233) antibody at 0.1 μ g/ml dilution.



ARG63757 anti-Renalase antibody WB image

Western blot: 35 μ g of Human heart (A), Mouse heart (B) and Rat heart (C) lysates (in RIPA buffer) stained with ARG63757 anti-Renalase antibody at 1 μ g/ml dilution and incubated at RT for 1 hour.