

ARG63724
anti-Plexin D1 antibodyPackage: 100 µg
Store at: -20°C

Summary

Product Description	Goat Polyclonal antibody recognizes Plexin D1
Tested Reactivity	Hu
Predict Reactivity	Cow, Dog, Pig
Tested Application	FACS, ICC/IF
Host	Goat
Clonality	Polyclonal
Isotype	IgG
Target Name	Plexin D1
Species	Human
Immunogen	C-LAEPKKSHRQSH
Conjugation	Un-conjugated
Alternate Names	PLEXD1; Plexin-D1

Application Instructions

Application table	Application	Dilution
	FACS	10 µg/ml
	ICC/IF	10 µg/ml
Application Note	* The dilutions indicate recommended starting dilutions and the optimal dilutions or concentrations should be determined by the scientist.	

Properties

Form	Liquid
Purification	Purified from goat serum by ammonium sulphate precipitation followed by antigen affinity chromatography using the immunizing peptide.
Buffer	Tris saline (pH 7.3), 0.02% Sodium azide and 0.5% BSA
Preservative	0.02% Sodium azide
Stabilizer	0.5% BSA
Concentration	0.5 mg/ml
Storage instruction	For continuous use, store undiluted antibody at 2-8°C for up to a week. For long-term storage, aliquot and store at -20°C or below. Storage in frost free freezers is not recommended. Avoid repeated freeze/thaw cycles. Suggest spin the vial prior to opening. The antibody solution should be gently mixed before use.

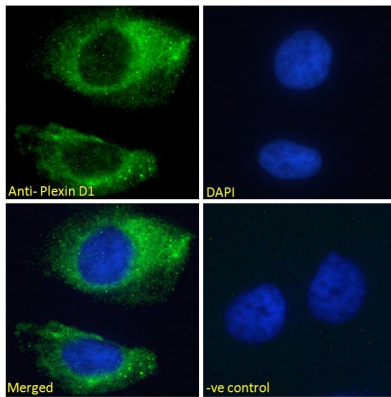
Note

For laboratory research only, not for drug, diagnostic or other use.

Bioinformation

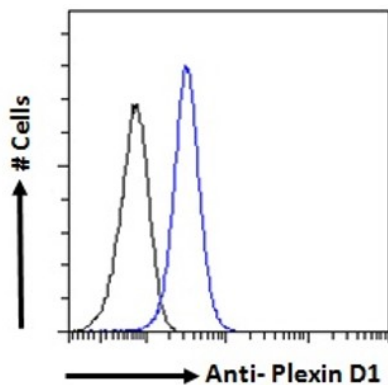
Database links	GeneID: 23129 Human Swiss-port # Q9Y4D7 Human
Gene Symbol	PLXND1
Gene Full Name	plexin D1
Function	Cell surface receptor for SEMA4A and for class 3 semaphorins, such as SEMA3A, SEMA3C and SEMA3E. Plays an important role in cell-cell signaling, and in regulating the migration of a wide spectrum of cell types. Regulates the migration of thymocytes in the medulla. Regulates endothelial cell migration. Plays an important role in ensuring the specificity of synapse formation. Required for normal development of the heart and vasculature (By similarity). Mediates anti-angiogenic signaling in response to SEMA3E. [UniProt]
Research Area	Cell Biology and Cellular Response antibody
Calculated Mw	212 kDa

Images



ARG63724 anti-Plexin D1 antibody ICC/IF image

Immunofluorescence: Paraformaldehyde fixed HeLa cells permeabilized with 0.15% Triton. Cells were stained with ARG63724 anti-Plexin D1 antibody (green) at 10 µg/ml dilution for 1 hour. DAPI (blue) for nuclear staining. Negative control: Unimmunized goat IgG (green) at 10 µg/ml dilution.



ARG63724 anti-Plexin D1 antibody FACS image

Flow Cytometry: Paraformaldehyde-fixed K562 cells permeabilized with 0.5% Triton. Cells were stained with ARG63724 anti-Plexin D1 antibody (blue line) at 10 µg/ml dilution for 1 hour, followed by incubation with Alexa FluorR 488 labelled secondary antibody. IgG control: Unimmunized goat IgG (black line).