

ARG63723 anti-BOULE / BOLL antibody

Package: 100 µg
Store at: -20°C

Summary

Product Description	Goat Polyclonal antibody recognizes BOULE / BOLL
Tested Reactivity	Hu
Predict Reactivity	Cow, Dog
Tested Application	IHC-P
Specificity	This antibody is expected to recognize both reported isoforms (NP_932074.1; NP_149019.1).
Host	Goat
Clonality	Polyclonal
Isotype	IgG
Target Name	BOULE / BOLL
Species	Human
Immunogen	C-QPEPIKTVWSIHY
Conjugation	Un-conjugated
Alternate Names	BOULE; Protein boule-like

Application Instructions

Application table	Application	Dilution
	IHC-P	4 - 6 µg/ml

Application Note IHC-P: Antigen Retrieval: Steam tissue section in Citrate buffer (pH 6.0).
* The dilutions indicate recommended starting dilutions and the optimal dilutions or concentrations should be determined by the scientist.

Properties

Form	Liquid
Purification	Purified from goat serum by ammonium sulphate precipitation followed by antigen affinity chromatography using the immunizing peptide.
Buffer	Tris saline (pH 7.3), 0.02% Sodium azide and 0.5% BSA
Preservative	0.02% Sodium azide
Stabilizer	0.5% BSA
Concentration	0.5 mg/ml
Storage instruction	For continuous use, store undiluted antibody at 2-8°C for up to a week. For long-term storage, aliquot and store at -20°C or below. Storage in frost free freezers is not recommended. Avoid repeated freeze/thaw cycles. Suggest spin the vial prior to opening. The antibody solution should be gently mixed before use.

Note For laboratory research only, not for drug, diagnostic or other use.

Bioinformation

Database links [GeneID: 66037 Human](#)

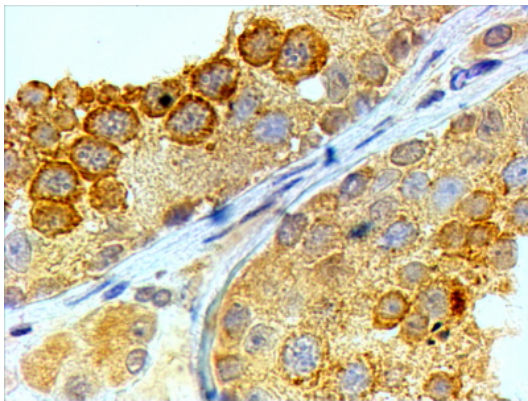
[Swiss-port # Q8N9W6 Human](#)

Background This gene belongs to the DAZ gene family required for germ cell development. It encodes an RNA-binding protein which is more similar to Drosophila Boule than to human proteins encoded by genes DAZ (deleted in azoospermia) or DAZL (deleted in azoospermia-like). Loss of this gene function results in the absence of sperm in semen (azoospermia). Histological studies demonstrated that the primary defect is at the meiotic G2/M transition. Two alternatively spliced transcript variants encoding distinct isoforms have been found for this gene. [provided by RefSeq, Jul 2008]

Research Area Gene Regulation antibody

Calculated Mw 31 kDa

Images



ARG63723 anti-BOULE / BOLL antibody IHC-P image

Immunohistochemistry: paraffin embedded Human Testis. (Steamed antigen retrieval with citrate buffer pH 6) stained with ARG63723 anti-BOULE / BOLL antibody at 4 µg/ml dilution followed by HRP-staining.