

## ARG63719 anti-SCAP2 / PRAP antibody

Package: 100 µg  
Store at: -20°C

### Summary

Product Description	Goat Polyclonal antibody recognizes SCAP2 / PRAP
Tested Reactivity	Hu
Predict Reactivity	Ms, Rat, Cow, Dog
Tested Application	WB
Host	Goat
Clonality	Polyclonal
Isotype	IgG
Target Name	SCAP2 / PRAP
Species	Human
Immunogen	C-GLVPKAYIMEMYDI
Conjugation	Un-conjugated
Alternate Names	SCAP2; PRAP; RA70; Src-associated adapter protein with PH and SH3 domains; Src family-associated phosphoprotein 2; Src kinase-associated phosphoprotein 2; Pyk2/RAFTK-associated protein; SKAP55 homolog; SKAP55R; Retinoic acid-induced protein 70; SKAP-55HOM; SKAP-HOM; Src kinase-associated phosphoprotein 55-related protein; SAPS

### Application Instructions

Application table	Application	Dilution
	WB	0.5 - 2 µg/ml

Application Note  
WB: Recommend incubate at RT for 1h.  
\* The dilutions indicate recommended starting dilutions and the optimal dilutions or concentrations should be determined by the scientist.

### Properties

Form	Liquid
Purification	Purified from goat serum by ammonium sulphate precipitation followed by antigen affinity chromatography using the immunizing peptide.
Buffer	Tris saline (pH 7.3), 0.02% Sodium azide and 0.5% BSA
Preservative	0.02% Sodium azide
Stabilizer	0.5% BSA
Concentration	0.5 mg/ml
Storage instruction	For continuous use, store undiluted antibody at 2-8°C for up to a week. For long-term storage, aliquot and store at -20°C or below. Storage in frost free freezers is not recommended. Avoid repeated freeze/thaw cycles. Suggest spin the vial prior to opening. The antibody solution should be gently mixed

before use.

Note

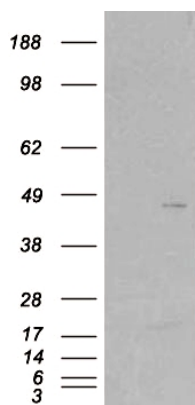
For laboratory research only, not for drug, diagnostic or other use.

## Bioinformation

---

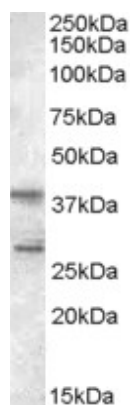
Database links	<a href="#">GeneID: 8935 Human</a> <a href="#">Swiss-port # O75563 Human</a>
Background	The protein encoded by this gene belongs to the src family kinases. This protein is similar to the src kinase associated phosphoprotein 1. It is an adaptor protein that is thought to play an essential role in the src signaling pathway in various cells. It inhibits PTK2B/RAFTK activity and regulates alpha-synuclein phosphorylation. [provided by RefSeq, Jul 2008]
Research Area	Signaling Transduction antibody
Calculated Mw	41 kDa
PTM	Phosphorylated in resting platelets. Phosphorylated by FYN on Tyr-261 upon T-cell activation (Probable). Dephosphorylated on Tyr-75 by PTPN22.

## Images



ARG63719 anti-SCAP2 / PRAP antibody WB image

Western Blot: 1). Mock transfection; 2) SKAP2 (RC206119) expressing plasmid transfected HEK293 cell lysate stained with ARG63719 anti-SCAP2 / PRAP antibody



ARG63719 anti-SCAP2 / PRAP antibody WB image

Western Blot: Jurkat lysate (35 µg protein in RIPA buffer) stained with ARG63719 anti-SCAP2 / PRAP antibody at 0.5 µg/ml dilution.