

**ARG63711**  
anti-XAGE1 antibodyPackage: 100 µg  
Store at: -20°C

### Summary

Product Description	Goat Polyclonal antibody recognizes XAGE1
Tested Reactivity	Hu
Tested Application	IHC-P
Specificity	This antibody is expected to recognise isoform d (NP_597673.1) only. Reported variants represent identical protein (NP_597673.1; NP_001091067.1; NP_001091074.1; NP_001091062.1; NP_001091065.1).
Host	Goat
Clonality	Polyclonal
Isotype	IgG
Target Name	XAGE1
Species	Human
Immunogen	CGFGFRRQGEDNT
Conjugation	Un-conjugated
Alternate Names	XAGE1C; XAGE1D; XAGE1; CTP9; Cancer/testis antigen 12.1; XAGE-1; G antigen family D member 2; X antigen family member 1; CT12.1D; CT12.1E; CT12.1C; GAGED2; CT12.1

### Application Instructions

Application table	Application	Dilution
	IHC-P	3 - 6 µg/ml
Application Note	IHC-P: Antigen Retrieval: Steam tissue section in Citrate buffer (pH 6.0). * The dilutions indicate recommended starting dilutions and the optimal dilutions or concentrations should be determined by the scientist.	

### Properties

Form	Liquid
Purification	Purified from goat serum by ammonium sulphate precipitation followed by antigen affinity chromatography using the immunizing peptide.
Buffer	Tris saline (pH 7.3), 0.02% Sodium azide and 0.5% BSA
Preservative	0.02% Sodium azide
Stabilizer	0.5% BSA
Concentration	0.5 mg/ml
Storage instruction	For continuous use, store undiluted antibody at 2-8°C for up to a week. For long-term storage, aliquot and store at -20°C or below. Storage in frost free freezers is not recommended. Avoid repeated freeze/thaw cycles. Suggest spin the vial prior to opening. The antibody solution should be gently mixed

before use.

Note

For laboratory research only, not for drug, diagnostic or other use.

## Bioinformation

---

Database links

[GeneID: 653067 Human](#)

[Swiss-port # Q9HD64 Human](#)

Background

This gene is a member of the XAGE subfamily, which belongs to the GAGE family. The GAGE genes are expressed in a variety of tumors and in some fetal and reproductive tissues. This gene is strongly expressed in Ewing's sarcoma, alveolar rhabdomyosarcoma and normal testis. The protein encoded by this gene contains a nuclear localization signal and shares a sequence similarity with other GAGE/PAGE proteins. Because of the expression pattern and the sequence similarity, this protein also belongs to a family of CT (cancer-testis) antigens. Alternative splicing of this gene, in addition to alternative transcription start sites, results in multiple transcript variants. [provided by RefSeq, Jan 2010]

Research Area

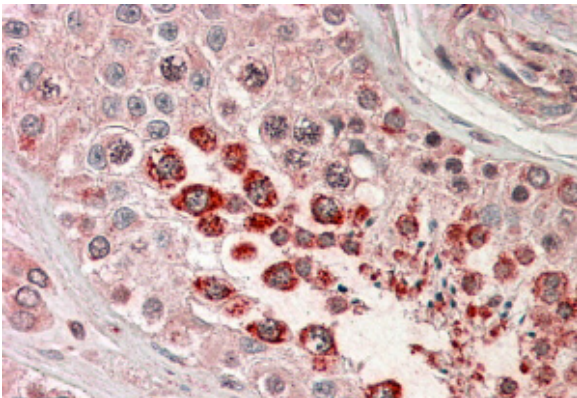
Cancer antibody; Controls and Markers antibody; Signaling Transduction antibody

Calculated Mw

9 kDa

## Images

---



ARG63711 anti-XAGE1 antibody IHC-P image

Immunohistochemistry: paraffin embedded Human Testis. (Steamed antigen retrieval with citrate buffer pH 6) stained with ARG63711 anti-XAGE1 (Isoform 1d) / GAGED2 antibody at 3.8 µg/ml dilution followed by AP-staining.