

ARG63691 anti-Clik 1 / STK35 antibody

Package: 100 µg
Store at: -20°C

Summary

Product Description	Goat Polyclonal antibody recognizes Clik 1 / STK35
Tested Reactivity	Hu, Ms, Pig
Predict Reactivity	Cow, Rat, Dog
Tested Application	FACS, ICC/IF, IHC-P, WB
Host	Goat
Clonality	Polyclonal
Isotype	IgG
Target Name	Clik 1 / STK35
Species	Human
Immunogen	ELETRMDQVTCAA
Conjugation	Un-conjugated
Alternate Names	STK35L1; CLP-36-interacting kinase 1; CLIK-1; PDLIM1-interacting kinase 1; Serine/threonine-protein kinase 35 L1; EC 2.7.11.1; Serine/threonine-protein kinase 35; CLIK1

Application Instructions

Application table	Application	Dilution
	FACS	10 µg/ml
	ICC/IF	10 µg/ml
	IHC-P	10 µg/ml
	WB	1 - 3 µg/ml
Application Note	IHC-P: Antigen Retrieval: Microwaved tissue section in Tris/EDTA buffer (pH 9.0). WB: Recommend incubate at RT for 1h. * The dilutions indicate recommended starting dilutions and the optimal dilutions or concentrations should be determined by the scientist.	

Properties

Form	Liquid
Purification	Purified from goat serum by ammonium sulphate precipitation followed by antigen affinity chromatography using the immunizing peptide.
Buffer	Tris saline (pH 7.3), 0.02% Sodium azide and 0.5% BSA
Preservative	0.02% Sodium azide
Stabilizer	0.5% BSA

Concentration	0.5 mg/ml
Storage instruction	For continuous use, store undiluted antibody at 2-8°C for up to a week. For long-term storage, aliquot and store at -20°C or below. Storage in frost free freezers is not recommended. Avoid repeated freeze/thaw cycles. Suggest spin the vial prior to opening. The antibody solution should be gently mixed before use.
Note	For laboratory research only, not for drug, diagnostic or other use.

Bioinformation

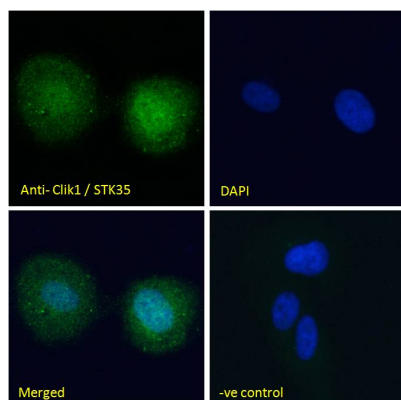
Database links	GeneID: 140901 Human GeneID: 67333 Mouse Swiss-port # Q80ZW0 Mouse Swiss-port # Q8TDR2 Human
Background	The protein encoded by this gene is a kinase that is predominantly found in the nucleus. However, it can interact with PDLIM1/CLP-36 in the cytoplasm and localize to actin stress fibers. The encoded protein may be a regulator of actin stress fibers in nonmuscle cells. [provided by RefSeq, Jul 2008]
Research Area	Signaling Transduction antibody
Calculated Mw	58 kDa
PTM	Autophosphorylated.

Images



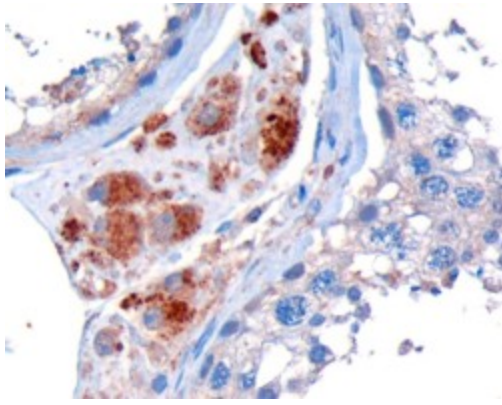
ARG63691 anti-Clik 1 / STK35 antibody WB image

Western blot: Human testis lysate (35 µg protein in RIPA buffer) stained with ARG63691 anti-Clik 1 / STK35 antibody at 1 µg/ml dilution.



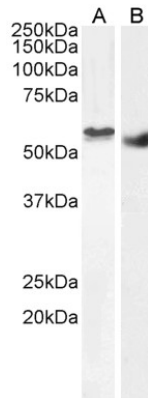
ARG63691 anti-Clik 1 / STK35 antibody ICC/IF image

Immunofluorescence: Paraformaldehyde fixed U2OS cells permeabilized with 0.15% Triton. Cells were stained with ARG63691 anti-Clik 1 / STK35 antibody (green) at 10 µg/ml dilution for 1 hour. DAPI (blue) for nuclear staining. Negative control: Unimmunized goat IgG (green) at 10 µg/ml dilution.



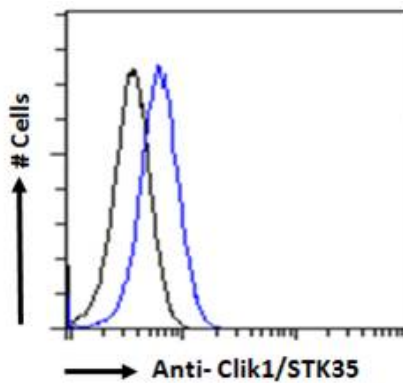
ARG63691 anti-Clik 1 / STK35 antibody IHC-P image

Immunohistochemistry: Paraffin embedded Human Testis. (Microwaved antigen retrieval with Tris/EDTA buffer pH9) stained with ARG63691 anti-Clik 1 / STK35 antibody at 10 $\mu\text{g}/\text{ml}$ dilution followed by HRP-staining.



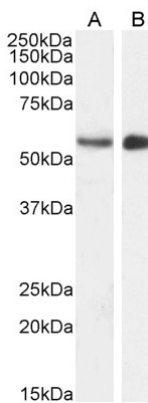
ARG63691 anti-Clik 1 / STK35 antibody WB image

Western blot: 35 μg of HEK293 nucleus (A) and Human breast cancer (B) lysates (in RIPA buffer) stained with ARG63691 anti-Clik 1 / STK35 antibody at 2 $\mu\text{g}/\text{ml}$ (A) and 1 $\mu\text{g}/\text{ml}$ (B) dilutions and incubated at RT for 1 hour.



ARG63691 anti-Clik 1 / STK35 antibody FACS image

Flow Cytometry: Paraformaldehyde-fixed HEK293 cells permeabilized with 0.5% Triton. Cells were stained with ARG63691 anti-Clik 1 / STK35 antibody (blue line) at 10 $\mu\text{g}/\text{ml}$ dilution for 1 hour, followed by incubation with Alexa FluorR 488 labelled secondary antibody. IgG control: Unimmunized goat IgG (black line).



ARG63691 anti-Clik 1 / STK35 antibody WB image

Western blot: 35 μg of Mouse (A) and Pig (B) testis lysates (in RIPA buffer) stained with ARG63691 anti-Clik 1 / STK35 antibody at 1 $\mu\text{g}/\text{ml}$ (A) and 2 $\mu\text{g}/\text{ml}$ (B) dilutions and incubated at RT for 1 hour.