

## ARG63688 anti-SLIMMER / FHL1 isoform B antibody

Package: 100 µg  
Store at: -20°C

### Summary

Product Description	Goat Polyclonal antibody recognizes SLIMMER / FHL1 isoform B
Tested Reactivity	Hu
Predict Reactivity	Ms, Dog
Tested Application	WB
Specificity	This antibody is specific for the FHL-1 isoform B (SLIMMER) and is expected to recognise an epitope corresponding to aa 233-246 of human SLIMMER protein.
Host	Goat
Clonality	Polyclonal
Isotype	IgG
Target Name	SLIMMER / FHL1 isoform B
Species	Human
Immunogen	CTVSRVSHPVSKARK
Conjugation	Un-conjugated
Alternate Names	FHL1A; FHL1B; KYOT; Four and a half LIM domains protein 1; SLIM; FLH1A; XMPMA; FHL-1; SLIM-1; SLIM1; SLIMMER; Skeletal muscle LIM-protein 1

### Application Instructions

Application table	Application	Dilution
	WB	0.01 - 0.1 µg/ml

**Application Note** WB: Recommend incubate at RT for 1h.  
\* The dilutions indicate recommended starting dilutions and the optimal dilutions or concentrations should be determined by the scientist.

### Properties

Form	Liquid
Purification	Purified from goat serum by ammonium sulphate precipitation followed by antigen affinity chromatography using the immunizing peptide.
Buffer	Tris saline (pH 7.3), 0.02% Sodium azide and 0.5% BSA
Preservative	0.02% Sodium azide
Stabilizer	0.5% BSA
Concentration	0.5 mg/ml
Storage instruction	For continuous use, store undiluted antibody at 2-8°C for up to a week. For long-term storage, aliquot and store at -20°C or below. Storage in frost free freezers is not recommended. Avoid repeated

freeze/thaw cycles. Suggest spin the vial prior to opening. The antibody solution should be gently mixed before use.

Note

For laboratory research only, not for drug, diagnostic or other use.

## Bioinformation

---

Database links

[GeneID: 2273 Human](#)

[Swiss-port # Q13642 Human](#)

Background

This gene encodes a member of the four-and-a-half-LIM-only protein family. Family members contain two highly conserved, tandemly arranged, zinc finger domains with four highly conserved cysteines binding a zinc atom in each zinc finger. Expression of these family members occurs in a cell- and tissue-specific mode and these proteins are involved in many cellular processes. Mutations in this gene have been found in patients with Emery-Dreifuss muscular dystrophy. Multiple alternately spliced transcript variants which encode different protein isoforms have been described.[provided by RefSeq, Nov 2009]

Research Area

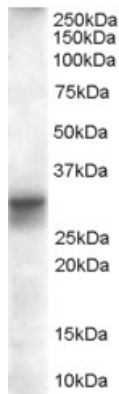
Cell Biology and Cellular Response antibody; Gene Regulation antibody

Calculated Mw

36 kDa

## Images

---



ARG63688 anti-SLIMMER / FHL1 isoform B antibody WB image

Western Blot: Human Heart lysate (35 µg protein in RIPA buffer) stained with ARG63688 anti-SLIMMER / FHL1 isoform B antibody at 0.01 µg/ml dilution.