

ARG63651 anti-SCARF1 / SREC antibody

Package: 100 µg
Store at: -20°C

Summary

Product Description	Goat Polyclonal antibody recognizes SCARF1 / SREC
Tested Reactivity	Hu
Tested Application	WB
Specificity	This antibody is expected to recognise all three reported isoforms (NP_003684.2; NP_663325.1; NP_663327.2). Epitope corresponding to aa 20-31, mapping to the mature human SCARF1 / SREC1 protein.
Host	Goat
Clonality	Polyclonal
Isotype	IgG
Target Name	SCARF1 / SREC
Species	Human
Immunogen	SELDPKGQHVC
Conjugation	Un-conjugated
Alternate Names	SREC; SREC-I; Scavenger receptor expressed by endothelial cells 1; Acetyl LDL receptor; SREC1; Scavenger receptor class F member 1

Application Instructions

Application table	Application	Dilution
	WB	0.3 - 1.0 µg/ml

Application Note
WB: Recommend incubate at RT for 1h.
* The dilutions indicate recommended starting dilutions and the optimal dilutions or concentrations should be determined by the scientist.

Properties

Form	Liquid
Purification	Purified from goat serum by ammonium sulphate precipitation followed by antigen affinity chromatography using the immunizing peptide.
Buffer	Tris saline (pH 7.3), 0.02% Sodium azide and 0.5% BSA
Preservative	0.02% Sodium azide
Stabilizer	0.5% BSA
Concentration	0.5 mg/ml
Storage instruction	For continuous use, store undiluted antibody at 2-8°C for up to a week. For long-term storage, aliquot and store at -20°C or below. Storage in frost free freezers is not recommended. Avoid repeated freeze/thaw cycles. Suggest spin the vial prior to opening. The antibody solution should be gently mixed

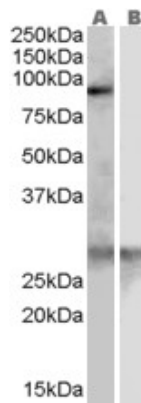
before use.

Note For laboratory research only, not for drug, diagnostic or other use.

Bioinformation

Database links	GeneID: 8578 Human Swiss-port # Q14162 Human
Background	The protein encoded by this gene is a scavenger receptor that is expressed in endothelial cells and mediates the binding and degradation of acetylated low density lipoprotein (Ac-LDL). Transcription factors ZNF444/EZF-2 and SP1 are found to be responsible for the regulation of this gene. Five alternatively spliced transcript variants encoding distinct isoforms have been described. [provided by RefSeq, Jul 2008]
Research Area	Cell Biology and Cellular Response antibody; Controls and Markers antibody; Metabolism antibody; Signaling Transduction antibody
Calculated Mw	87 kDa

Images



ARG63651 anti-SCARF1 / SREC antibody WB image

Western Blot: Human Heart lysate (35 µg protein in RIPA buffer) with (B) and without (A) blocking with the immunising peptide. stained with ARG63651 anti-SCARF1 / SREC antibody at 0.3 µg/ml dilution.