

## ARG63642 anti-PITPNM / PITPNM1 antibody

Package: 100 µg  
Store at: -20°C

### Summary

Product Description	Goat Polyclonal antibody recognizes PITPNM / PITPNM1
Tested Reactivity	Hu
Predict Reactivity	Ms, Cow, Dog
Tested Application	FACS, ICC/IF
Specificity	This antibody is expected to recognise both reported isoforms.
Host	Goat
Clonality	Polyclonal
Isotype	IgG
Target Name	PITPNM / PITPNM1
Species	Human
Immunogen	C-KARSISLKLDSEE
Conjugation	Un-conjugated
Alternate Names	RDGBA1; Phosphatidylinositol transfer protein, membrane-associated 1; RDGB1; Membrane-associated phosphatidylinositol transfer protein 1; NIR2; Rd9; PITPNM; NIR-2; RDGB; DRES9; RDGBA; Pyk2 N-terminal domain-interacting receptor 2; Drosophila retinal degeneration B homolog; PITPnm 1

### Application Instructions

Application table	Application	Dilution
	FACS	10 µg/ml
	ICC/IF	10 µg/ml

**Application Note** \* The dilutions indicate recommended starting dilutions and the optimal dilutions or concentrations should be determined by the scientist.

### Properties

Form	Liquid
Purification	Purified from goat serum by ammonium sulphate precipitation followed by antigen affinity chromatography using the immunizing peptide.
Buffer	Tris saline (pH 7.3), 0.02% Sodium azide and 0.5% BSA
Preservative	0.02% Sodium azide
Stabilizer	0.5% BSA
Concentration	0.5 mg/ml
Storage instruction	For continuous use, store undiluted antibody at 2-8°C for up to a week. For long-term storage, aliquot and store at -20°C or below. Storage in frost free freezers is not recommended. Avoid repeated

freeze/thaw cycles. Suggest spin the vial prior to opening. The antibody solution should be gently mixed before use.

Note

For laboratory research only, not for drug, diagnostic or other use.

## Bioinformation

Database links

[GeneID: 9600 Human](#)

[Swiss-port # O00562 Human](#)

Background

PITPNM1 belongs to a family of membrane-associated phosphatidylinositol transfer domain-containing proteins that share homology with the Drosophila retinal degeneration B (rdgB) protein (Ocana et al., 2005 [PubMed 15627748]).[supplied by OMIM, Mar 2008]

Research Area

Cell Biology and Cellular Response antibody; Neuroscience antibody; Signaling Transduction antibody

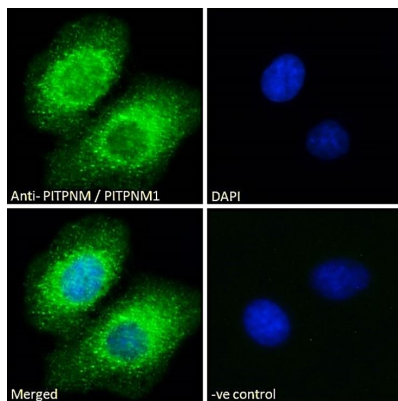
Calculated Mw

135 kDa

PTM

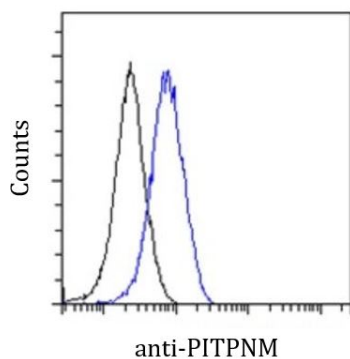
Phosphorylated on multiple sites by CDK1 at the onset of mitosis. Phosphorylation facilitates dissociation from the Golgi complex and is required for interaction with PLK1.  
Phosphorylated on threonine residues upon treatment with oleic acid.  
Phosphorylated on tyrosine residues by PTK2B.

## Images



ARG63642 anti-PITPNM / PITPNM1 antibody ICC/IF image

Immunofluorescence: Paraformaldehyde fixed A549 cells permeabilized with 0.15% Triton. Cells were stained with ARG63642 anti-PITPNM / PITPNM1 antibody (green) at 10 µg/ml dilution for 1 hour. DAPI (blue) for nuclear staining. Negative control: Unimmunized Goat IgG at 10 µg/ml dilution.



ARG63642 anti-PITPNM / PITPNM1 antibody FACS image

Flow Cytometry: Paraformaldehyde fixed A549 cells permeabilized with 0.5% Triton. Cells were stained with ARG63642 anti-PITPNM / PITPNM1 antibody (blue line) at 10 µg/ml dilution for 1 hour, followed by incubation with Alexa Fluor® 488 labelled secondary antibody. IgG control: Unimmunized Goat IgG (black line) followed by Alexa Fluor® 488 secondary antibody.