

ARG63626 anti-SLC16A7 / MCT2 antibody

Package: 100 µg
Store at: -20°C

Summary

Product Description	Goat Polyclonal antibody recognizes SLC16A7 / MCT2
Tested Reactivity	Hu
Tested Application	IHC-P, WB
Host	Goat
Clonality	Polyclonal
Isotype	IgG
Target Name	SLC16A7 / MCT2
Species	Human
Immunogen	C-SNAQSVTSERETNI
Conjugation	Un-conjugated
Alternate Names	Monocarboxylate transporter 2; Solute carrier family 16 member 7; MCT2; MCT 2

Application Instructions

Application table	Application	Dilution
	IHC-P	2.5 µg/ml
	WB	1 - 3 µg/ml
Application Note	WB: Recommend incubate at RT for 1h. IHC-P: Antigen Retrieval: Steam tissue section in Citrate buffer (pH 6.0). * The dilutions indicate recommended starting dilutions and the optimal dilutions or concentrations should be determined by the scientist.	

Properties

Form	Liquid
Purification	Purified from goat serum by antigen affinity chromatography.
Buffer	Tris saline (pH 7.3), 0.02% Sodium azide and 0.5% BSA.
Preservative	0.02% Sodium azide
Stabilizer	0.5% BSA
Concentration	0.5 mg/ml
Storage instruction	For continuous use, store undiluted antibody at 2-8°C for up to a week. For long-term storage, aliquot and store at -20°C or below. Storage in frost free freezers is not recommended. Avoid repeated freeze/thaw cycles. Suggest spin the vial prior to opening. The antibody solution should be gently mixed before use.
Note	For laboratory research only, not for drug, diagnostic or other use.

Bioinformation

Database links [GeneID: 9194 Human](#)

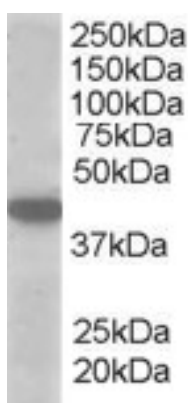
[Swiss-port # O60669 Human](#)

Background This gene is a member of the monocarboxylate transporter family. Members in this family transport metabolites, such as lactate, pyruvate, and ketone bodies. The protein encoded by this gene catalyzes the proton-linked transport of monocarboxylates and has the highest affinity for pyruvate. This protein has been reported to be more highly expressed in prostate and colorectal cancer specimens when compared to control specimens. Alternative splicing results in multiple transcript variants. [provided by RefSeq, Jul 2012]

Research Area Cancer antibody; Metabolism antibody; Signaling Transduction antibody

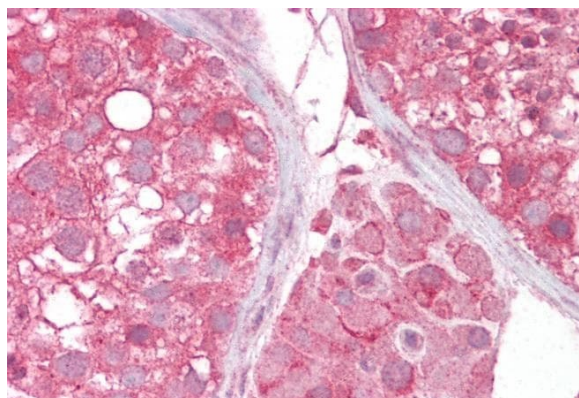
Calculated Mw 52 kDa

Images



ARG63626 anti-SLC16A7 / MCT2 antibody WB image

Western Blot: A549 lysate (35 µg protein in RIPA buffer) stained with ARG63626 anti-SLC16A7 / MCT2 antibody at 1 µg/ml dilution.



ARG63626 anti-SLC16A7 / MCT2 antibody IHC-P image

Immunohistochemistry: Paraffin-embedded Human testis tissue. Antigen Retrieval: Steam tissue section in Citrate buffer (pH 6.0). The tissue section was stained with ARG63626 anti-SLC16A7 / MCT2 antibody at 2.5 µg/ml dilution followed by AP-staining.