

ARG63624 anti-LNK / SH2B3 antibody

Package: 100 µg
Store at: -20°C

Summary

Product Description	Goat Polyclonal antibody recognizes LNK / SH2B3
Tested Reactivity	Hu
Tested Application	WB
Host	Goat
Clonality	Polyclonal
Isotype	IgG
Target Name	LNK / SH2B3
Species	Human
Immunogen	NGPALQPSSPC
Conjugation	Un-conjugated
Alternate Names	Lymphocyte-specific adapter protein Lnk; LNK; SH2B adapter protein 3; Signal transduction protein Lnk; IDDM20; Lymphocyte adapter protein

Application Instructions

Application table	Application	Dilution
	WB	0.3 - 1.0 µg/ml
Application Note	WB: Recommend incubate at RT for 1h. * The dilutions indicate recommended starting dilutions and the optimal dilutions or concentrations should be determined by the scientist.	

Properties

Form	Liquid
Purification	Purified from goat serum by ammonium sulphate precipitation followed by antigen affinity chromatography using the immunizing peptide.
Buffer	Tris saline (pH 7.3), 0.02% Sodium azide and 0.5% BSA
Preservative	0.02% Sodium azide
Stabilizer	0.5% BSA
Concentration	0.5 mg/ml
Storage instruction	For continuous use, store undiluted antibody at 2-8°C for up to a week. For long-term storage, aliquot and store at -20°C or below. Storage in frost free freezers is not recommended. Avoid repeated freeze/thaw cycles. Suggest spin the vial prior to opening. The antibody solution should be gently mixed before use.
Note	For laboratory research only, not for drug, diagnostic or other use.

Bioinformation

Database links

[GeneID: 10019 Human](#)

[Swiss-port # Q9UQQ2 Human](#)

Background

This gene encodes a member of the SH2B adaptor family of proteins, which are involved in a range of signaling activities by growth factor and cytokine receptors. The encoded protein is a key negative regulator of cytokine signaling and plays a critical role in hematopoiesis. Mutations in this gene have been associated with susceptibility to celiac disease type 13 and susceptibility to insulin-dependent diabetes mellitus.[provided by RefSeq, May 2010]

Research Area

Immune System antibody; Signaling Transduction antibody

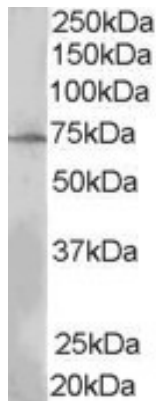
Calculated Mw

63 kDa

PTM

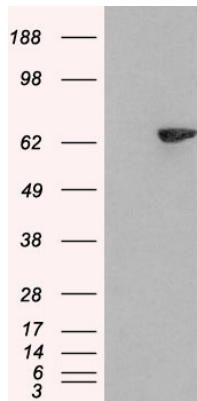
Tyrosine phosphorylated by LCK.

Images



ARG63624 anti-LNK / SH2B3 antibody WB image

Western Blot: MOLT4 lysate (35 µg protein in RIPA buffer) stained with ARG63624 anti-LNK / SH2B3 antibody at 0.3 µg/ml dilution.



ARG63624 anti-LNK / SH2B3 antibody WB image

Western Blot: 1). Mock transfection; 2) SH2B3 (RC218359) expressing plasmid transfected HEK293 cell lysate stained with ARG63624 anti-LNK / SH2B3 antibody