

## ARG63617 anti-SPRY1 / Sprouty 1 antibody

Package: 100 µg  
Store at: -20°C

### Summary

Product Description	Goat Polyclonal antibody recognizes SPRY1 / Sprouty 1
Tested Reactivity	Hu, Ms
Tested Application	FACS, ICC/IF, IHC-P, WB
Specificity	NP_005832.1 and NP_955359.1 represent variants of the same protein.
Host	Goat
Clonality	Polyclonal
Isotype	IgG
Target Name	SPRY1 / Sprouty 1
Species	Human
Immunogen	CPSRGQGKPS
Conjugation	Un-conjugated
Alternate Names	hSPRY1; Protein sprouty homolog 1; Spry-1

### Application Instructions

Application table	Application	Dilution
	FACS	10 µg/ml
	ICC/IF	10 µg/ml
	IHC-P	1 - 3 µg/ml
	WB	0.3 - 3 µg/ml

Application Note  
WB: Recommend incubate at RT for 1h.  
\* The dilutions indicate recommended starting dilutions and the optimal dilutions or concentrations should be determined by the scientist.

### Properties

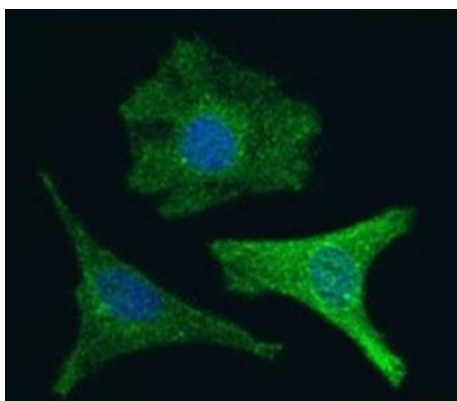
Form	Liquid
Purification	Purified from goat serum by ammonium sulphate precipitation followed by antigen affinity chromatography using the immunizing peptide.
Buffer	Tris saline (pH 7.3), 0.02% Sodium azide and 0.5% BSA
Preservative	0.02% Sodium azide
Stabilizer	0.5% BSA
Concentration	0.5 mg/ml

Storage instruction	For continuous use, store undiluted antibody at 2-8°C for up to a week. For long-term storage, aliquot and store at -20°C or below. Storage in frost free freezers is not recommended. Avoid repeated freeze/thaw cycles. Suggest spin the vial prior to opening. The antibody solution should be gently mixed before use.
Note	For laboratory research only, not for drug, diagnostic or other use.

## Bioinformation

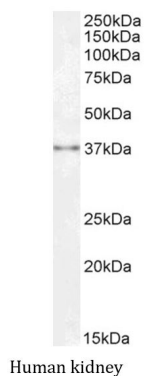
Database links	<a href="#">GeneID: 10252 Human</a> <a href="#">GeneID: 24063 Mouse</a> <a href="#">Swiss-port # O43609 Human</a> <a href="#">Swiss-port # Q9QXV9 Mouse</a>
Gene Symbol	SPRY1
Gene Full Name	sprouty homolog 1, antagonist of FGF signaling (Drosophila)
Function	May function as an antagonist of fibroblast growth factor (FGF) pathways and may negatively modulate respiratory organogenesis. [UniProt]
Research Area	Signaling Transduction antibody
Calculated Mw	35 kDa

## Images



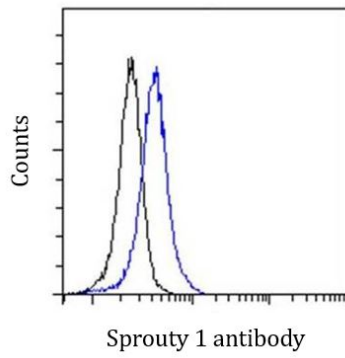
ARG63617 anti-SPRY1 / Sprouty 1 antibody ICC/IF image

Immunofluorescence: Paraformaldehyde-fixed HeLa cells permeabilized with 0.15% Triton. Cells were stained with ARG63617 anti-SPRY1 / Sprouty 1 antibody (green) at 10 µg/ml dilution for 1 hour. DAPI (blue) for nuclear staining.



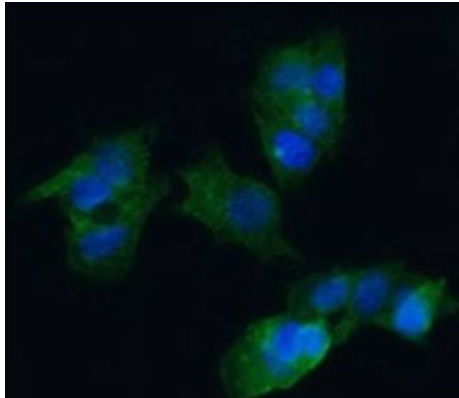
ARG63617 anti-SPRY1 / Sprouty 1 antibody WB image

Western blot: 35 µg of Human kidney lysate (in RIPA buffer) stained with ARG63617 anti-SPRY1 / Sprouty 1 antibody at 0.3 µg/ml dilution and incubated at RT for 1 hour.



#### ARG63617 anti-SPRY1 / Sprouty 1 antibody FACS image

Flow Cytometry: Paraformaldehyde-fixed HEK293 cells permeabilized with 0.5% Triton. Cells were stained with ARG63617 anti-SPRY1 / Sprouty 1 antibody at 10  $\mu\text{g}/\text{ml}$  dilution for 1 hour (blue line) or Goat IgG for isotype control (black line), followed by incubation with Alexa Fluor<sup>®</sup> 488 labelled secondary antibody.



#### ARG63617 anti-SPRY1 / Sprouty 1 antibody ICC/IF image

Immunofluorescence: Paraformaldehyde-fixed HepG2 cells permeabilized with 0.15% Triton. Cells were stained with ARG63617 anti-SPRY1 / Sprouty 1 antibody (green) at 10  $\mu\text{g}/\text{ml}$  dilution for 1 hour. DAPI (blue) for nuclear staining.