

ARG63602 anti-DDAH1 antibody

Package: 100 µg
Store at: -20°C

Summary

Product Description	Goat Polyclonal antibody recognizes DDAH1
Tested Reactivity	Hu
Predict Reactivity	Cow
Tested Application	WB
Specificity	This antibody is expected to recognize both reported isoforms (NP_036269.1 and NP_001127917.1).
Host	Goat
Clonality	Polyclonal
Isotype	IgG
Target Name	DDAH1
Species	Human
Immunogen	TCCSVLINKKVDS
Conjugation	Un-conjugated
Alternate Names	Dimethylarginine dimethylaminohydrolase 1; DDAHI; G; DDAH; EC 3.5.3.18; N; Dimethylargininase-1; HEL-S-16; DDAH-1

Application Instructions

Application table	Application	Dilution
	WB	0.1 - 0.3 µg/ml
Application Note	WB: Recommend incubate at RT for 1h. * The dilutions indicate recommended starting dilutions and the optimal dilutions or concentrations should be determined by the scientist.	

Properties

Form	Liquid
Purification	Purified from goat serum by ammonium sulphate precipitation followed by antigen affinity chromatography using the immunizing peptide.
Buffer	Tris saline (pH 7.3), 0.02% Sodium azide and 0.5% BSA
Preservative	0.02% Sodium azide
Stabilizer	0.5% BSA
Concentration	0.5 mg/ml
Storage instruction	For continuous use, store undiluted antibody at 2-8°C for up to a week. For long-term storage, aliquot and store at -20°C or below. Storage in frost free freezers is not recommended. Avoid repeated freeze/thaw cycles. Suggest spin the vial prior to opening. The antibody solution should be gently mixed

before use.

Note

For laboratory research only, not for drug, diagnostic or other use.

Bioinformation

Database links

[GeneID: 23576 Human](#)

[Swiss-port # O94760 Human](#)

Background

This gene belongs to the dimethylarginine dimethylaminohydrolase (DDAH) gene family. The encoded enzyme plays a role in nitric oxide generation by regulating cellular concentrations of methylarginines, which in turn inhibit nitric oxide synthase activity. [provided by RefSeq, Jul 2008]

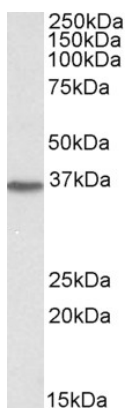
Research Area

Cell Biology and Cellular Response antibody; Neuroscience antibody

Calculated Mw

31 kDa

Images



ARG63602 anti-DDAH1 antibody WB image

Western Blot: Human Kidney lysate (35 µg protein in RIPA buffer) stained with ARG63602 anti-DDAH1 antibody at 0.03 µg/ml dilution.