

## ARG63600 anti-Prefoldin antibody

Package: 100 µg  
Store at: -20°C

### Summary

Product Description	Goat Polyclonal antibody recognizes Prefoldin
Tested Reactivity	Hu
Predict Reactivity	Ms, Rat, Cow, Dog
Tested Application	WB
Host	Goat
Clonality	Polyclonal
Isotype	IgG
Target Name	Prefoldin
Species	Human
Immunogen	C-DNIREMLMARRAQ
Conjugation	Un-conjugated
Alternate Names	PDF; Prefoldin subunit 1; PFD1

### Application Instructions

Application table	Application	Dilution
	WB	1 - 3 µg/ml

**Application Note**  
WB: Recommend incubate at RT for 1h.  
\* The dilutions indicate recommended starting dilutions and the optimal dilutions or concentrations should be determined by the scientist.

### Properties

Form	Liquid
Purification	Purified from goat serum by ammonium sulphate precipitation followed by antigen affinity chromatography using the immunizing peptide.
Buffer	Tris saline (pH 7.3), 0.02% Sodium azide and 0.5% BSA
Preservative	0.02% Sodium azide
Stabilizer	0.5% BSA
Concentration	0.5 mg/ml
Storage instruction	For continuous use, store undiluted antibody at 2-8°C for up to a week. For long-term storage, aliquot and store at -20°C or below. Storage in frost free freezers is not recommended. Avoid repeated freeze/thaw cycles. Suggest spin the vial prior to opening. The antibody solution should be gently mixed before use.
Note	For laboratory research only, not for drug, diagnostic or other use.

## Bioinformation

---

### Database links

[GeneID: 5201 Human](#)

[Swiss-port # O60925 Human](#)

### Background

This gene encodes a member of the prefoldin beta subunit family. The encoded protein is one of six subunits of prefoldin, a molecular chaperone complex that binds and stabilizes newly synthesized polypeptides, thereby allowing them to fold correctly. The complex, consisting of two alpha and four beta subunits, forms a double beta barrel assembly with six protruding coiled-coils. [provided by RefSeq, Jul 2008]

### Research Area

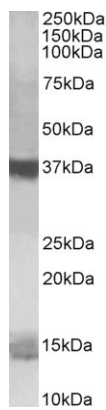
Gene Regulation antibody; Signaling Transduction antibody

### Calculated Mw

14 kDa

## Images

---



### ARG63600 anti-Prefoldin antibody WB image

Western Blot: K562 lysate (35 µg protein in RIPA buffer) stained with ARG63600 anti-Prefoldin antibody at 1 µg/ml dilution.