

ARG63581 anti-LIME1 antibody

Package: 100 µg
Store at: -20°C

Summary

Product Description	Goat Polyclonal antibody recognizes LIME1
Tested Reactivity	Ms
Predict Reactivity	Rat
Tested Application	WB
Host	Goat
Clonality	Polyclonal
Isotype	IgG
Target Name	LIME1
Species	Mouse
Immunogen	C-ENVYESIKEMGL
Conjugation	Un-conjugated
Alternate Names	Lck-interacting molecule; Lck-interacting membrane protein; Lck-interacting transmembrane adapter 1; dJ583P15.4; LIME

Application Instructions

Application table	Application	Dilution
	WB	0.5 - 2 µg/ml

Application Note
WB: Recommend incubate at RT for 1h.
* The dilutions indicate recommended starting dilutions and the optimal dilutions or concentrations should be determined by the scientist.

Properties

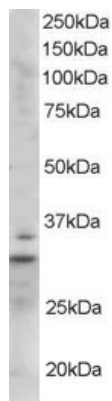
Form	Liquid
Purification	Purified from goat serum by ammonium sulphate precipitation followed by antigen affinity chromatography using the immunizing peptide.
Buffer	Tris saline (pH 7.3), 0.02% Sodium azide and 0.5% BSA
Preservative	0.02% Sodium azide
Stabilizer	0.5% BSA
Concentration	0.5 mg/ml
Storage instruction	For continuous use, store undiluted antibody at 2-8°C for up to a week. For long-term storage, aliquot and store at -20°C or below. Storage in frost free freezers is not recommended. Avoid repeated freeze/thaw cycles. Suggest spin the vial prior to opening. The antibody solution should be gently mixed before use.

Note For laboratory research only, not for drug, diagnostic or other use.

Bioinformation

Database links	GeneID: 72699 Mouse Swiss-port # Q9EQR5 Mouse
Gene Symbol	Lime1
Gene Full Name	Lck interacting transmembrane adaptor 1
Background	This gene encodes a transmembrane adaptor protein that links the T and B-cell receptor stimulation to downstream signaling pathways via its association with the Src family kinases Lck and Lyn, respectively. Alternative splicing of this gene results in multiple transcript variants. [provided by RefSeq, Mar 2015]
Function	Involved in BCR (B-cell antigen receptor)-mediated signaling in B-cells and TCR (T-cell antigen receptor)-mediated T-cell signaling in T-cells. In absence of TCR signaling, may be involved in CD4-mediated inhibition of T-cell activation. Couples activation of these receptors and their associated kinases with distal intracellular events such as calcium mobilization or MAPK activation through the recruitment of PLCG2, GRB2, GRAP2, and other signaling molecules. [UniProt]
Research Area	Immune System antibody
Calculated Mw	31 kDa
PTM	Palmitoylation of Cys-28 and Cys-31 is required for raft targeting. Phosphorylated on tyrosines upon TCR activation and/or CD4 coreceptor stimulation, or upon BCR stimulation; which leads to the recruitment of SH2-containing proteins.

Images



ARG63581 anti-LIME1 antibody WB image

Western blot: Mouse Heart lysate (RIPA buffer, 35 μ g total protein per lane) stained with ARG63581 anti-LIME1 antibody at 1 μ g/ml dilution.