

ARG63563 anti-CPEB1 antibody

Package: 100 µg
Store at: -20°C

Summary

Product Description	Goat Polyclonal antibody recognizes CPEB1
Tested Reactivity	Hu
Tested Application	WB
Specificity	This antibody is expected to recognise alle reported isoforms. Variants (NP_001073002.1; NP_001073003.1) encode the same isoform.
Host	Goat
Clonality	Polyclonal
Isotype	IgG
Target Name	CPEB1
Species	Human
Immunogen	C-PLMRNQKNRDS
Conjugation	Un-conjugated
Alternate Names	hCPEB-1; CPEB-1; CPE-BP1; CPE-binding protein 1; CPEB; Cytoplasmic polyadenylation element-binding protein 1; h-CPEB

Application Instructions

Application table	Application	Dilution
	WB	0.5 - 2 µg/ml
Application Note	WB: Recommend incubate at RT for 1h. * The dilutions indicate recommended starting dilutions and the optimal dilutions or concentrations should be determined by the scientist.	

Properties

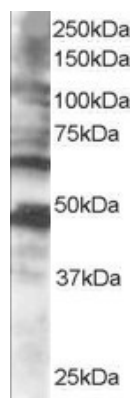
Form	Liquid
Purification	Purified from goat serum by ammonium sulphate precipitation followed by antigen affinity chromatography using the immunizing peptide.
Buffer	Tris saline (pH 7.3), 0.02% Sodium azide and 0.5% BSA
Preservative	0.02% Sodium azide
Stabilizer	0.5% BSA
Concentration	0.5 mg/ml
Storage instruction	For continuous use, store undiluted antibody at 2-8°C for up to a week. For long-term storage, aliquot and store at -20°C or below. Storage in frost free freezers is not recommended. Avoid repeated freeze/thaw cycles. Suggest spin the vial prior to opening. The antibody solution should be gently mixed before use.

Note For laboratory research only, not for drug, diagnostic or other use.

Bioinformation

Database links	GeneID: 64506 Human Swiss-port # Q9BZB8 Human
Background	This gene encodes a member of the cytoplasmic polyadenylation element (CPE) binding protein family. This highly conserved protein binds to a specific RNA sequence called the CPE found in the 3' UTR of some mRNAs. Similar proteins in <i>Xenopus</i> and mouse function to induce cytoplasmic polyadenylation of dormant mRNAs with short polyA tails, resulting in their translation. Members of this protein family regulate translation of cyclin B1 during embryonic cell divisions. Multiple transcript variants encoding different isoforms have been found for this gene. [provided by RefSeq, Jul 2008]
Research Area	Gene Regulation antibody; Neuroscience antibody
Calculated Mw	63 kDa
PTM	Phosphorylated on serine/threonine residues by AURKA within positions 166 and 197. Phosphorylation and dephosphorylation on Thr-172 regulates cytoplasmic polyadenylation and translation of CPE-containing mRNAs. Phosphorylation on Thr-172 by AURKA and CAMK2A activates CPEB1. Phosphorylation on Thr-172 may be promoted by APLP1. Phosphorylation increases binding to RNA (By similarity).

Images



ARG63563 anti-CPEB1 antibody WB image

Western Blot: human brain lysate (RIPA buffer, 35 µg total protein per lane) stained with ARG63563 anti-CPEB1 antibody at 0.5 µg/ml dilution.