

## ARG63556 anti-GCIP / MAID antibody

Package: 100 µg  
Store at: -20°C

### Summary

Product Description	Goat Polyclonal antibody recognizes GCIP / MAID
Tested Reactivity	Hu
Predict Reactivity	Dog
Tested Application	IHC-P
Specificity	This antibody is expected to recognise both human isoforms of this protein.
Host	Goat
Clonality	Polyclonal
Isotype	IgG
Target Name	GCIP / MAID
Species	Human
Immunogen	C-NRIKELTQSELEL
Conjugation	Un-conjugated
Alternate Names	DIP1; Grap2 and cyclin-D-interacting protein; GCIP; Cyclin-D1-binding protein 1; HHM; Human homolog of Maid

### Application Instructions

Application table	Application	Dilution
	IHC-P	3 - 6 µg/ml
Application Note	IHC-P: Antigen Retrieval: Steam tissue section in Citrate buffer (pH 6.0). * The dilutions indicate recommended starting dilutions and the optimal dilutions or concentrations should be determined by the scientist.	

### Properties

Form	Liquid
Purification	Purified from goat serum by ammonium sulphate precipitation followed by antigen affinity chromatography using the immunizing peptide.
Buffer	Tris saline (pH 7.3), 0.02% Sodium azide and 0.5% BSA
Preservative	0.02% Sodium azide
Stabilizer	0.5% BSA
Concentration	0.5 mg/ml
Storage instruction	For continuous use, store undiluted antibody at 2-8°C for up to a week. For long-term storage, aliquot and store at -20°C or below. Storage in frost free freezers is not recommended. Avoid repeated freeze/thaw cycles. Suggest spin the vial prior to opening. The antibody solution should be gently mixed

before use.

Note

For laboratory research only, not for drug, diagnostic or other use.

## Bioinformation

---

Database links

[GeneID: 23582 Human](#)

[Swiss-port # O95273 Human](#)

Background

This gene was identified by the interaction of its gene product with Grap2, a leukocyte-specific adaptor protein important for immune cell signaling. The protein encoded by this gene was shown to interact with cyclin D. Transfection of this gene in cells was reported to reduce the phosphorylation of Rb gene product by cyclin D-dependent protein kinase, and inhibit E2F1-mediated transcription activity. This protein was also found to interact with helix-loop-helix protein E12 and is thought to be a negative regulator of liver-specific gene expression. Several alternatively spliced variants have been found for this gene. [provided by RefSeq, Apr 2009]

Research Area

Cell Biology and Cellular Response antibody; Controls and Markers antibody; Signaling Transduction antibody

Calculated Mw

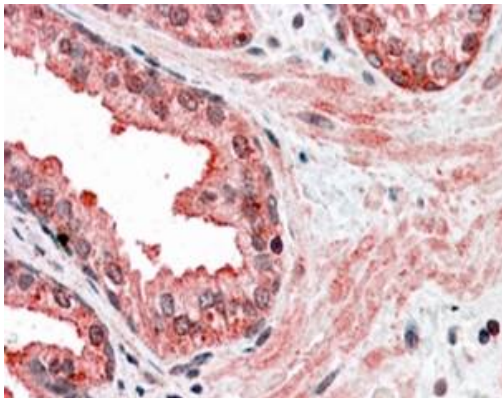
40 kDa

PTM

Phosphorylated.

## Images

---



ARG63556 anti-GCIP / MAID antibody IHC-P image

Immunohistochemistry: paraffin embedded Human Prostate. (Steamed antigen retrieval with citrate buffer pH 6) stained with ARG63556 anti-CCNDBP1 antibody at 3.8 µg/ml dilution followed by AP-staining.