

ARG63546
anti-CYB561D2 antibodyPackage: 100 µg
Store at: -20°C

Summary

Product Description	Goat Polyclonal antibody recognizes CYB561D2
Tested Reactivity	Hu
Predict Reactivity	Ms, Rat, Cow, Dog
Tested Application	WB
Host	Goat
Clonality	Polyclonal
Isotype	IgG
Target Name	CYB561D2
Species	Human
Immunogen	C-VSNAYLYRKRIQP
Conjugation	Un-conjugated
Alternate Names	101F6; Cytochrome b561 domain-containing protein 2; Putative tumor suppressor protein 101F6; XXcos-LUCA11.4; TSP10

Application Instructions

Application table	Application	Dilution
	WB	1 - 3 µg/ml

Application Note WB: Recommend incubate at RT for 1h.
* The dilutions indicate recommended starting dilutions and the optimal dilutions or concentrations should be determined by the scientist.

Properties

Form	Liquid
Purification	Purified from goat serum by ammonium sulphate precipitation followed by antigen affinity chromatography using the immunizing peptide.
Buffer	Tris saline (pH 7.3), 0.02% Sodium azide and 0.5% BSA
Preservative	0.02% Sodium azide
Stabilizer	0.5% BSA
Concentration	0.5 mg/ml
Storage instruction	For continuous use, store undiluted antibody at 2-8°C for up to a week. For long-term storage, aliquot and store at -20°C or below. Storage in frost free freezers is not recommended. Avoid repeated freeze/thaw cycles. Suggest spin the vial prior to opening. The antibody solution should be gently mixed before use.

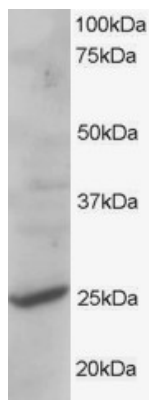
Note

For laboratory research only, not for drug, diagnostic or other use.

Bioinformation

Database links	GeneID: 11068 Human Swiss-port # O14569 Human
Gene Symbol	CYB561D2
Gene Full Name	cytochrome b561 family, member D2
Research Area	Gene Regulation antibody
Calculated Mw	24 kDa

Images



ARG63546 anti-CYB561D2 antibody WB image

Western Blot: human liver lysate (RIPA buffer, 35 µg total protein per lane) stained with ARG63546 anti-CYB561D2 antibody at 1 µg/ml dilution.