

ARG63527 anti-DUSP16 antibody

Package: 100 µg
Store at: -20°C

Summary

Product Description	Goat Polyclonal antibody recognizes DUSP16
Tested Reactivity	Hu
Predict Reactivity	Ms, Rat, Cow, Dog
Tested Application	IHC-P
Host	Goat
Clonality	Polyclonal
Isotype	IgG
Target Name	DUSP16
Species	Human
Immunogen	AHEMIGTQIVTER-C
Conjugation	Un-conjugated
Alternate Names	MKP-7; Dual specificity protein phosphatase 16; MAP kinase phosphatase 7; EC 3.1.3.16; Mitogen-activated protein kinase phosphatase 7; EC 3.1.3.48; MKP7

Application Instructions

Application table	Application	Dilution
	IHC-P	2 - 4 µg/ml

Application Note
IHC-P: Antigen Retrieval: Steam tissue section in Citrate buffer (pH 6.0).
* The dilutions indicate recommended starting dilutions and the optimal dilutions or concentrations should be determined by the scientist.

Properties

Form	Liquid
Purification	Purified from goat serum by ammonium sulphate precipitation followed by antigen affinity chromatography using the immunizing peptide.
Buffer	Tris saline (pH 7.3), 0.02% Sodium azide and 0.5% BSA
Preservative	0.02% Sodium azide
Stabilizer	0.5% BSA
Concentration	0.5 mg/ml
Storage instruction	For continuous use, store undiluted antibody at 2-8°C for up to a week. For long-term storage, aliquot and store at -20°C or below. Storage in frost free freezers is not recommended. Avoid repeated freeze/thaw cycles. Suggest spin the vial prior to opening. The antibody solution should be gently mixed before use.

Note For laboratory research only, not for drug, diagnostic or other use.

Bioinformation

Database links [GeneID: 80824 Human](#)

[Swiss-port # Q9BY84 Human](#)

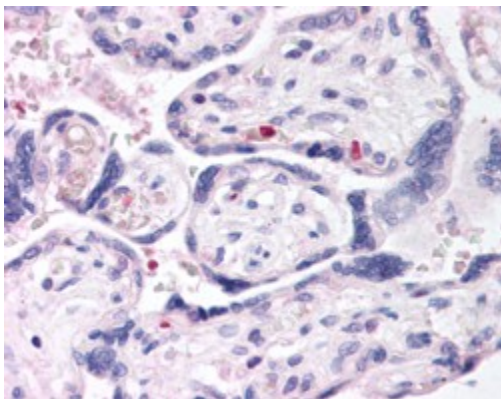
Background This gene encodes a mitogen-activated protein kinase phosphatase that is a member of the dual specificity protein phosphatase subfamily. These phosphatases inactivate their target kinases by dephosphorylating both the phosphoserine/threonine and phosphotyrosine residues. The encoded protein specifically regulates the c-Jun amino-terminal kinase (JNK) and extracellular signal-regulated kinase (ERK) pathways.[provided by RefSeq, May 2010]

Research Area Signaling Transduction antibody

Calculated Mw 73 kDa

PTM Phosphorylated at Ser-446 by MAPK1/ERK2, which prevents its degradation, and thereby stabilizes it and blocks JNK MAPK activity.
(Microbial infection) Acetylated at Lys-55 by the M.tuberculosis Eis protein; this leads to the inhibition of JNK-dependent autophagy, phagosome maturation, and ROS (reactive oxygen species) generation for enhanced intracellular survival of M.tuberculosis.

Images



ARG63527 anti-DUSP16 antibody IHC-P image

Immunohistochemistry: paraffin embedded Human Placenta. (Steamed antigen retrieval with citrate buffer pH 6) stained with ARG63527 anti-DUSP16 antibody at 2.5 µg/ml dilution followed by AP-staining.