

## ARG63497 anti-CMG1 / CCDC2 / IFT74 antibody

Package: 100 µg  
Store at: -20°C

### Summary

Product Description	Goat Polyclonal antibody recognizes CMG1 / CCDC2 / IFT74
Tested Reactivity	Hu
Predict Reactivity	Rat
Tested Application	WB
Host	Goat
Clonality	Polyclonal
Isotype	IgG
Target Name	CMG1 / CCDC2 / IFT74
Species	Human
Immunogen	C-KTIVDALHSTSGN
Conjugation	Un-conjugated
Alternate Names	CMG-1; Capillary morphogenesis gene 1 protein; Intraflagellar transport protein 74 homolog; CCDC2; CMG1; Coiled-coil domain-containing protein 2

### Application Instructions

Application table	Application	Dilution
	WB	0.2 - 0.6 µg/ml

**Application Note**  
WB: Recommend incubate at RT for 1h.  
\* The dilutions indicate recommended starting dilutions and the optimal dilutions or concentrations should be determined by the scientist.

### Properties

Form	Liquid
Purification	Purified from goat serum by ammonium sulphate precipitation followed by antigen affinity chromatography using the immunizing peptide.
Buffer	Tris saline (pH 7.3), 0.02% Sodium azide and 0.5% BSA
Preservative	0.02% Sodium azide
Stabilizer	0.5% BSA
Concentration	0.5 mg/ml
Storage instruction	For continuous use, store undiluted antibody at 2-8°C for up to a week. For long-term storage, aliquot and store at -20°C or below. Storage in frost free freezers is not recommended. Avoid repeated freeze/thaw cycles. Suggest spin the vial prior to opening. The antibody solution should be gently mixed before use.

Note For laboratory research only, not for drug, diagnostic or other use.

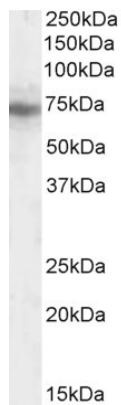
## Bioinformation

---

Database links	<a href="#">GeneID: 80173 Human</a> <a href="#">Swiss-port # Q96LB3 Human</a>
Gene Symbol	IFT74
Gene Full Name	intraflagellar transport 74
Function	Component of the intraflagellar transport (IFT) complex B: together with IFT81, forms a tubulin-binding module that specifically mediates transport of tubulin within the cilium. Binds beta-tubulin via its basic region. Required for ciliogenesis. [UniProt]
Research Area	Cell Biology and Cellular Response antibody
Calculated Mw	69 kDa

## Images

---



ARG63497 anti-CMG1 / CCDC2 / IFT74 antibody WB image

Western blot: 35 µg of HEK293 cell lysate (in RIPA buffer) stained with ARG63497 anti-CMG1 / CCDC2 / IFT74 antibody at 0.2 µg/ml dilution and incubated at RT for 1 hour.