

ARG63494 anti-KMT2B / MLL4 antibody

Package: 100 µg
Store at: -20°C

Summary

Product Description	Goat Polyclonal antibody recognizes KMT2B / MLL4
Tested Reactivity	Hu
Predict Reactivity	Ms, Rat, Dog, Pig
Tested Application	IHC-P, WB
Host	Goat
Clonality	Polyclonal
Isotype	IgG
Target Name	KMT2B / MLL4
Species	Human
Immunogen	CNCGAKRCRRFLN
Conjugation	Un-conjugated
Alternate Names	TRX2; Trithorax homolog 2; HRX2; MLL1B; WW domain-binding protein 7; Histone-lysine N-methyltransferase 2B; Lysine N-methyltransferase 2B; MLL2; CXXC10; WBP-7; MLL4; EC 2.1.1.43; WBP7; Myeloid/lymphoid or mixed-lineage leukemia protein 4

Application Instructions

Application table	Application	Dilution
	IHC-P	Assay - dependent
	WB	5 - 10 µg/ml
Application Note	WB: Recommend incubate at RT for 1h. IHC-P: Antigen Retrieval: Steam tissue section in Citrate buffer (pH 6.0). * The dilutions indicate recommended starting dilutions and the optimal dilutions or concentrations should be determined by the scientist.	

Properties

Form	Liquid
Purification	Purified from goat serum by ammonium sulphate precipitation followed by antigen affinity chromatography using the immunizing peptide.
Buffer	Tris saline (pH 7.3), 0.02% Sodium azide and 0.5% BSA
Preservative	0.02% Sodium azide
Stabilizer	0.5% BSA
Concentration	0.5 mg/ml
Storage instruction	For continuous use, store undiluted antibody at 2-8°C for up to a week. For long-term storage, aliquot

and store at -20°C or below. Storage in frost free freezers is not recommended. Avoid repeated freeze/thaw cycles. Suggest spin the vial prior to opening. The antibody solution should be gently mixed before use.

Note For laboratory research only, not for drug, diagnostic or other use.

Bioinformation

Database links [GeneID: 9757 Human](#)

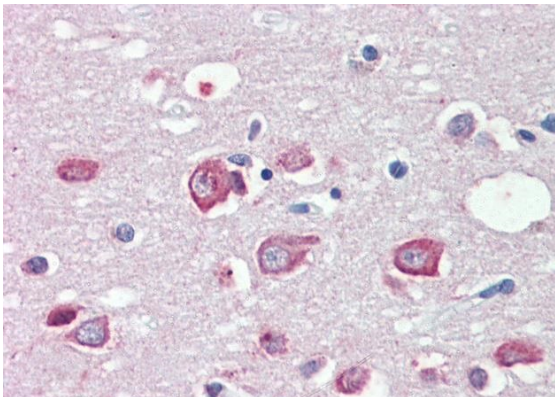
[Swiss-port # Q9UMN6 Human](#)

Background This gene encodes a protein which contains multiple domains including a CXXC zinc finger, three PHD zinc fingers, two FY-rich domains, and a SET (suppressor of variegation, enhancer of zeste, and trithorax) domain. The SET domain is a conserved C-terminal domain that characterizes proteins of the MLL (mixed-lineage leukemia) family. This gene is ubiquitously expressed in adult tissues. It is also amplified in solid tumor cell lines, and may be involved in human cancer. Two alternatively spliced transcript variants encoding distinct isoforms have been reported for this gene, however, the full length nature of the shorter transcript is not known. [provided by RefSeq, Jul 2008]

Research Area Gene Regulation antibody

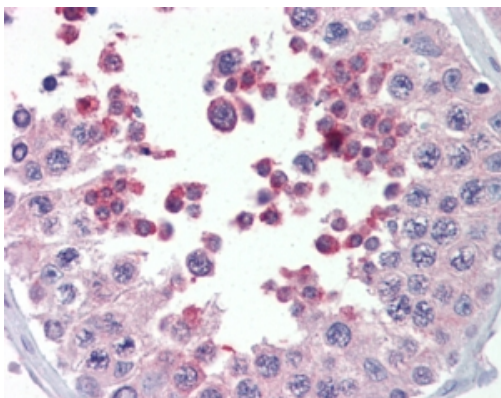
Calculated Mw 294 kDa

Images



ARG63494 anti-KMT2B / MLL4 antibody IHC-P image

Immunohistochemistry: Paraffin-embedded Human cortex tissue. Antigen Retrieval: Steam tissue section in Citrate buffer (pH 6.0). The tissue section was stained with ARG63494 anti-KMT2B / MLL4 antibody at 5 µg/ml dilution followed by AP-staining.



ARG63494 anti-MLL4 antibody IHC-P image

Immunohistochemistry: paraffin embedded Human Testis. (Steamed antigen retrieval with citrate buffer pH 6) stained with ARG63494 anti-MLL4 antibody at 5 µg/ml dilution followed by AP-staining.