

ARG63493
anti-CLLD8 / SETDB2 antibodyPackage: 100 µg
Store at: -20°C

Summary

Product Description	Goat Polyclonal antibody recognizes CLLD8 / SETDB2
Tested Reactivity	Hu
Predict Reactivity	Ms, Rat, Cow, Dog, Pig
Tested Application	WB
Specificity	This antibody is expected to recognize both reported isoforms (NP_114121.2; NP_001153780.1).
Host	Goat
Clonality	Polyclonal
Isotype	IgG
Target Name	CLLD8 / SETDB2
Species	Human
Immunogen	GEKNGDAKTFWME-C
Conjugation	Un-conjugated
Alternate Names	KMT1F; SET domain bifurcated 2; C13orf4; Lysine N-methyltransferase 1F; CLLL8; Histone-lysine N-methyltransferase SETDB2; Chronic lymphocytic leukemia deletion region gene 8 protein; EC 2.1.1.43; CLLD8

Application Instructions

Application table	Application	Dilution
	WB	1.5 - 4.5 µg/ml

Application Note WB: Recommend incubate at RT for 1h.
* The dilutions indicate recommended starting dilutions and the optimal dilutions or concentrations should be determined by the scientist.

Properties

Form	Liquid
Purification	Purified from goat serum by ammonium sulphate precipitation followed by antigen affinity chromatography using the immunizing peptide.
Buffer	Tris saline (pH 7.3), 0.02% Sodium azide and 0.5% BSA
Preservative	0.02% Sodium azide
Stabilizer	0.5% BSA
Concentration	0.5 mg/ml
Storage instruction	For continuous use, store undiluted antibody at 2-8°C for up to a week. For long-term storage, aliquot and store at -20°C or below. Storage in frost free freezers is not recommended. Avoid repeated

freeze/thaw cycles. Suggest spin the vial prior to opening. The antibody solution should be gently mixed before use.

Note

For laboratory research only, not for drug, diagnostic or other use.

Bioinformation

Database links

[GeneID: 83852 Human](#)

[Swiss-port # Q96T68 Human](#)

Background

Proteins that contain a SET domain, such as SETDB2, modulate gene expression epigenetically through histone H3 (see MIM 601128) methylation. SETDB2 is likely a histone H3 methyltransferase, as it contains both the active site and flanking cysteine residues required for catalytic activity (Zhang et al., 2003 [PubMed 12754510]).[supplied by OMIM, Mar 2008]

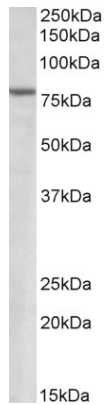
Research Area

Gene Regulation antibody

Calculated Mw

82 kDa

Images



ARG63493 anti-CLLD8 / SETDB2 antibody WB image

Western Blot: Human Heart lysate (35 µg protein in RIPA buffer) stained with ARG63493 anti-CLLD8 / SETDB2 antibody at 1.5 µg/ml dilution.