

ARG63490 anti-FENS1 / WDFY1 antibody

Package: 100 µg
Store at: -20°C

Summary

Product Description	Goat Polyclonal antibody recognizes FENS1 / WDFY1
Tested Reactivity	Hu
Predict Reactivity	Ms, Rat
Tested Application	IHC-P
Specificity	This antibody is expected to recognise both reported isoforms (as represented by NP_065881 and NP_848127)
Host	Goat
Clonality	Polyclonal
Isotype	IgG
Target Name	FENS1 / WDFY1
Species	Human
Immunogen	VVGCSLATGFSPH
Conjugation	Un-conjugated
Alternate Names	FENS-1; Zinc finger FYVE domain-containing protein 17; ZFYVE17; Phosphoinositide-binding protein 1; WD40- and FYVE domain-containing protein 1; WD repeat and FYVE domain-containing protein 1; WDF1

Application Instructions

Application table	Application	Dilution
	IHC-P	4 µg/ml

Application Note IHC-P: Antigen Retrieval: Steam tissue section in Tris/EDTA buffer (pH 9.0).
* The dilutions indicate recommended starting dilutions and the optimal dilutions or concentrations should be determined by the scientist.

Properties

Form	Liquid
Purification	Purified from goat serum by ammonium sulphate precipitation followed by antigen affinity chromatography using the immunizing peptide.
Buffer	Tris saline (pH 7.3), 0.02% Sodium azide and 0.5% BSA
Preservative	0.02% Sodium azide
Stabilizer	0.5% BSA
Concentration	0.5 mg/ml
Storage instruction	For continuous use, store undiluted antibody at 2-8°C for up to a week. For long-term storage, aliquot

and store at -20°C or below. Storage in frost free freezers is not recommended. Avoid repeated freeze/thaw cycles. Suggest spin the vial prior to opening. The antibody solution should be gently mixed before use.

Note For laboratory research only, not for drug, diagnostic or other use.

Bioinformation

Database links [GeneID: 57590 Human](#)

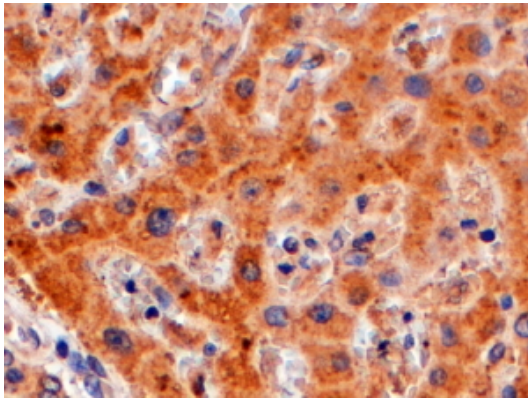
[Swiss-port # Q8IWB7 Human](#)

Background The FYVE domain mediates the recruitment of proteins involved in membrane trafficking and cell signaling to phosphatidylinositol 3-phosphate (PtdIns(3)P)-containing membranes. This gene encodes a protein which contains a single FYVE domain and multiple WD40 repeats. This protein is localized to endosomes. [provided by RefSeq, Jul 2008]

Research Area Controls and Markers antibody; Signaling Transduction antibody

Calculated Mw 46 kDa

Images



ARG63490 anti-FENS1 / WDFY1 antibody IHC-P image

Immunohistochemistry: Paraffin-embedded Human liver tissue.
Antigen Retrieval: Steam tissue section in Tris/EDTA buffer (pH 9.0).
The tissue section was stained with ARG63490 anti-FENS1 / WDFY1 antibody at 4 µg/ml dilution, followed by HRP-staining.