

ARG63488 anti-PAX8 antibody

Package: 100 µg, 50 µg
Store at: -20°C

Summary

Product Description	Goat Polyclonal antibody recognizes PAX8
Tested Reactivity	Hu
Predict Reactivity	Ms, Rat
Tested Application	IHC-P, WB
Specificity	This antibody is expected to recognise all five human isoforms (as represented by NP_003457.1; NP_039245.1; NP_039246.1; NP_039247.1; NP_054698.1)
Host	Goat
Clonality	Polyclonal
Isotype	IgG
Target Name	PAX8
Species	Human
Immunogen	PHNSIRSGHGGLN-C
Conjugation	Un-conjugated
Alternate Names	Paired box protein Pax-8

Application Instructions

Application table	Application	Dilution
	IHC-P	5 µg/ml
	WB	1 - 2 µg/ml

Application Note
WB: Recommend incubate at RT for 1h.
IHC-P: Antigen Retrieval: Steam tissue section in Citrate buffer (pH 6.0).
* The dilutions indicate recommended starting dilutions and the optimal dilutions or concentrations should be determined by the scientist.

Properties

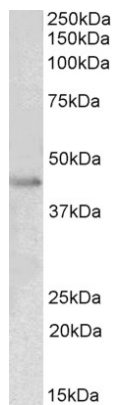
Form	Liquid
Purification	Purified from goat serum by ammonium sulphate precipitation followed by antigen affinity chromatography using the immunizing peptide.
Buffer	Tris saline (pH 7.3), 0.02% Sodium azide and 0.5% BSA
Preservative	0.02% Sodium azide
Stabilizer	0.5% BSA
Concentration	0.5 mg/ml

Storage instruction	For continuous use, store undiluted antibody at 2-8°C for up to a week. For long-term storage, aliquot and store at -20°C or below. Storage in frost free freezers is not recommended. Avoid repeated freeze/thaw cycles. Suggest spin the vial prior to opening. The antibody solution should be gently mixed before use.
Note	For laboratory research only, not for drug, diagnostic or other use.

Bioinformation

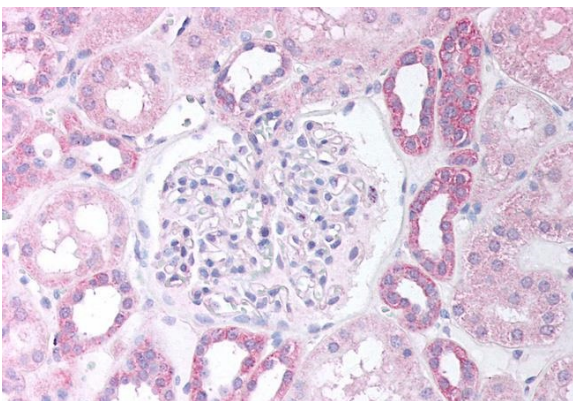
Database links	GeneID: 7849 Human Swiss-port # Q06710 Human
Background	This gene encodes a member of the paired box (PAX) family of transcription factors. Members of this gene family typically encode proteins that contain a paired box domain, an octapeptide, and a paired-type homeodomain. This nuclear protein is involved in thyroid follicular cell development and expression of thyroid-specific genes. Mutations in this gene have been associated with thyroid dysgenesis, thyroid follicular carcinomas and atypical follicular thyroid adenomas. Alternatively spliced transcript variants encoding different isoforms have been described. [provided by RefSeq, Mar 2010]
Research Area	Gene Regulation antibody; Neuroscience antibody
Calculated Mw	48 kDa

Images



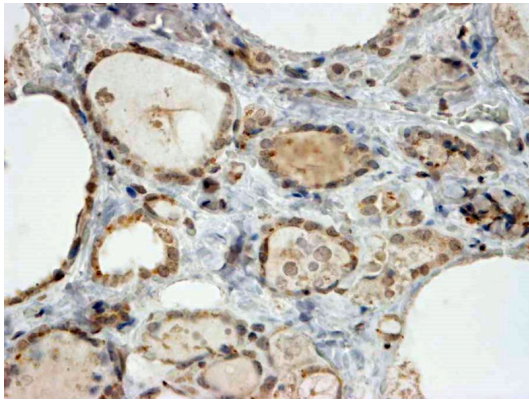
ARG63488 anti-PAX8 antibody WB image

Western Blot: Human Kidney lysate (35 µg protein in RIPA buffer) stained with ARG63488 anti-PAX8 antibody at 1.5 µg/ml dilution.



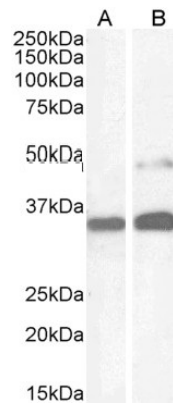
ARG63488 anti-PAX8 antibody IHC-P image

Immunohistochemistry: Paraffin-embedded Human kidney cortex tissue. Antigen Retrieval: Steam tissue section in Citrate buffer (pH 6.0). The tissue section was stained with ARG63488 anti-PAX8 antibody at 5 µg/ml dilution followed by AP-staining.



ARG63488 anti-PAX8 antibody IHC-P image

Immunohistochemistry: paraffin embedded Human Human Thyroid Gland. (Steamed antigen retrieval with citrate buffer pH 6) stained with ARG63488 anti-PAX8 antibody at 2 $\mu\text{g}/\text{ml}$ dilution followed by HRP-staining.



ARG63488 anti-PAX8 antibody WB image

Western blot: 35 μg of Human kidney (A) and HeLa cell (B) lysates (in RIPA buffer) stained with ARG63488 anti-PAX8 antibody at 1 $\mu\text{g}/\text{ml}$ dilution and incubated at RT for 1 hour.