

## ARG63479 anti-CHFR antibody

Package: 100 µg  
Store at: -20°C

### Summary

Product Description	Goat Polyclonal antibody recognizes CHFR
Tested Reactivity	Hu
Predict Reactivity	Ms, Rat, Cow, Pig
Tested Application	IHC-P
Specificity	This antibody is expected to recognise all reported isoforms.
Host	Goat
Clonality	Polyclonal
Isotype	IgG
Target Name	CHFR
Species	Human
Immunogen	KFNHICEQTRFKN
Conjugation	Un-conjugated
Alternate Names	EC 6.3.2.-; RNF196; E3 ubiquitin-protein ligase CHFR; RNF116; Checkpoint with forkhead and RING finger domains protein; RING finger protein 196

### Application Instructions

Application table	Application	Dilution
	IHC-P	2.5 µg/ml

**Application Note** IHC-P: Antigen Retrieval: Steam tissue section in Citrate buffer (pH 6.0).  
\* The dilutions indicate recommended starting dilutions and the optimal dilutions or concentrations should be determined by the scientist.

### Properties

Form	Liquid
Purification	Purified from goat serum by ammonium sulphate precipitation followed by antigen affinity chromatography using the immunizing peptide.
Buffer	Tris saline (pH 7.3), 0.02% Sodium azide and 0.5% BSA
Preservative	0.02% Sodium azide
Stabilizer	0.5% BSA
Concentration	0.5 mg/ml
Storage instruction	For continuous use, store undiluted antibody at 2-8°C for up to a week. For long-term storage, aliquot and store at -20°C or below. Storage in frost free freezers is not recommended. Avoid repeated freeze/thaw cycles. Suggest spin the vial prior to opening. The antibody solution should be gently mixed

before use.

Note

For laboratory research only, not for drug, diagnostic or other use.

## Bioinformation

---

Database links

[GeneID: 55743 Human](#)

[Swiss-port # Q96EP1 Human](#)

Background

This gene encodes an E3 ubiquitin-protein ligase required for the maintenance of the antephasic checkpoint that regulates cell cycle entry into mitosis and, therefore, may play a key role in cell cycle progression and tumorigenesis. The encoded protein has an N-terminal forkhead-associated domain, a central RING-finger domain, and a cysteine-rich C-terminal region. Alternatively spliced transcript variants that encode different protein isoforms have been described. [provided by RefSeq, Mar 2014]

Research Area

Cancer antibody; Cell Biology and Cellular Response antibody; Gene Regulation antibody

Calculated Mw

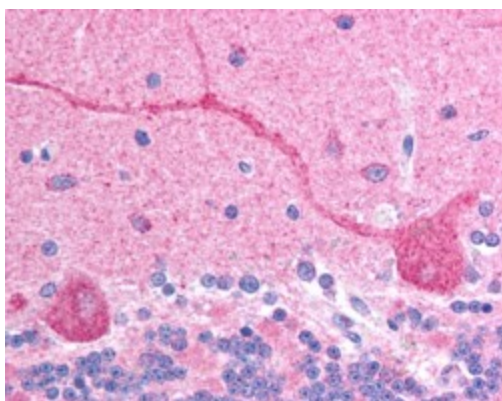
73 kDa

PTM

Poly-ADP-ribosylated. In addition to binding non covalently poly(ADP-ribose) via its PBZ-type zinc finger, the protein is also covalently poly-ADP-ribosylated by PARP1.  
Autoubiquitinated; may regulate its cellular level.  
Phosphorylated by PKB. Phosphorylation may affect its E3 ligase activity.

## Images

---



ARG63479 anti-CHFR antibody IHC-P image

Immunohistochemistry: paraffin embedded human brain (cerebellum). (Steamed antigen retrieval with citrate buffer pH 6) stained with ARG63479 anti-CHFR antibody at 2.5 µg/ml dilution followed by AP-staining.