

ARG63477 anti-MRPL3 antibody

Package: 100 µg
Store at: -20°C

Summary

Product Description	Goat Polyclonal antibody recognizes MRPL3
Tested Reactivity	Hu
Predict Reactivity	Cow, Pig
Tested Application	WB
Host	Goat
Clonality	Polyclonal
Isotype	IgG
Target Name	MRPL3
Species	Human
Immunogen	NVCQPGAPSITFA
Conjugation	Un-conjugated
Alternate Names	RPML3; L3mt; MRL3; MRP-L3; COXPD9; 39S ribosomal protein L3, mitochondrial

Application Instructions

Application table	Application	Dilution
	WB	1 - 3 µg/ml
Application Note	WB: Recommend incubate at RT for 1h. * The dilutions indicate recommended starting dilutions and the optimal dilutions or concentrations should be determined by the scientist.	

Properties

Form	Liquid
Purification	Purified from goat serum by ammonium sulphate precipitation followed by antigen affinity chromatography using the immunizing peptide.
Buffer	Tris saline (pH 7.3), 0.02% Sodium azide and 0.5% BSA
Preservative	0.02% Sodium azide
Stabilizer	0.5% BSA
Concentration	0.5 mg/ml
Storage instruction	For continuous use, store undiluted antibody at 2-8°C for up to a week. For long-term storage, aliquot and store at -20°C or below. Storage in frost free freezers is not recommended. Avoid repeated freeze/thaw cycles. Suggest spin the vial prior to opening. The antibody solution should be gently mixed before use.
Note	For laboratory research only, not for drug, diagnostic or other use.

Bioinformation

Database links

[GeneID: 11222 Human](#)

[Swiss-port # P09001 Human](#)

Background

Mammalian mitochondrial ribosomal proteins are encoded by nuclear genes and help in protein synthesis within the mitochondrion. Mitochondrial ribosomes (mitoribosomes) consist of a small 28S subunit and a large 39S subunit. They have an estimated 75% protein to rRNA composition compared to prokaryotic ribosomes, where this ratio is reversed. Another difference between mammalian mitoribosomes and prokaryotic ribosomes is that the latter contain a 5S rRNA. Among different species, the proteins comprising the mitoribosome differ greatly in sequence, and sometimes in biochemical properties, which prevents easy recognition by sequence homology. This gene encodes a 39S subunit protein that belongs to the L3P ribosomal protein family. A pseudogene corresponding to this gene is found on chromosome 13q. [provided by RefSeq, Jul 2008]

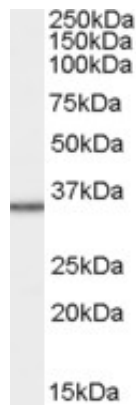
Research Area

Gene Regulation antibody

Calculated Mw

39 kDa

Images



ARG63477 anti-MRPL3 antibody WB image

Western Blot: HepG2 cell lysate (RIPA buffer, 35 µg total protein per lane) stained with ARG63477 anti-MRPL3 antibody at 1 µg/ml dilution.