

ARG63469 anti-HEC1 antibody

Package: 100 µg
Store at: -20°C

Summary

Product Description	Goat Polyclonal antibody recognizes HEC1
Tested Reactivity	Hu
Tested Application	IHC-P, WB
Host	Goat
Clonality	Polyclonal
Isotype	IgG
Target Name	HEC1
Species	Human
Immunogen	C-YEKKATLIKSSEE
Conjugation	Un-conjugated
Alternate Names	Kinetochores-associated protein 2; TID3; hsNDC80; HEC1; KNTC2; Kinetochores protein NDC80 homolog; Highly expressed in cancer protein; HEC; Retinoblastoma-associated protein HEC; HsHec1; Kinetochores protein Hec1

Application Instructions

Application table	Application	Dilution
	IHC-P	5 µg/ml
	WB	0.5 - 2 µg/ml
Application Note	WB: Recommend incubate at RT for 1h. IHC-P: Antigen Retrieval: Steam tissue section in Citrate buffer (pH 6.0). * The dilutions indicate recommended starting dilutions and the optimal dilutions or concentrations should be determined by the scientist.	

Properties

Form	Liquid
Purification	Purified from goat serum by ammonium sulphate precipitation followed by antigen affinity chromatography using the immunizing peptide.
Buffer	Tris saline (pH 7.3), 0.02% Sodium azide and 0.5% BSA
Preservative	0.02% Sodium azide
Stabilizer	0.5% BSA
Concentration	0.5 mg/ml
Storage instruction	For continuous use, store undiluted antibody at 2-8°C for up to a week. For long-term storage, aliquot and store at -20°C or below. Storage in frost free freezers is not recommended. Avoid repeated freeze/thaw cycles. Suggest spin the vial prior to opening. The antibody solution should be gently mixed

before use.

Note

For laboratory research only, not for drug, diagnostic or other use.

Bioinformation

Database links

[GeneID: 10403 Human](#)

[Swiss-port # O14777 Human](#)

Background

This gene encodes a component of the NDC80 kinetochore complex. The encoded protein consists of an N-terminal microtubule binding domain and a C-terminal coiled-coiled domain that interacts with other components of the complex. This protein functions to organize and stabilize microtubule-kinetochore interactions and is required for proper chromosome segregation. [provided by RefSeq, Oct 2011]

Research Area

Cancer antibody; Cell Biology and Cellular Response antibody; Gene Regulation antibody

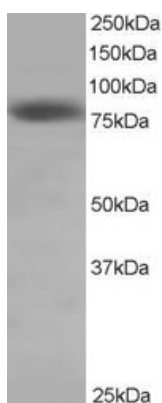
Calculated Mw

74 kDa

PTM

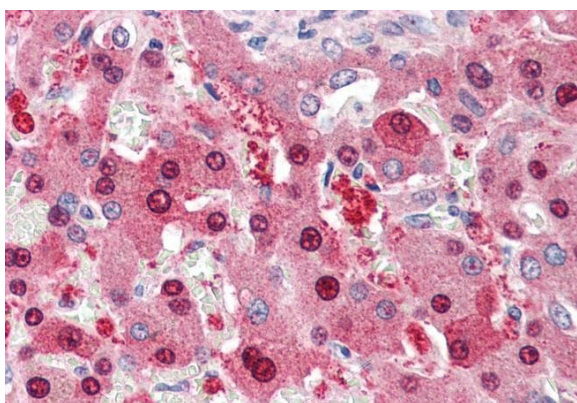
Phosphorylation begins in S phase of the cell cycle and peaks in mitosis. Phosphorylated by NEK2. May also be phosphorylated by AURKA and AURKB.

Images



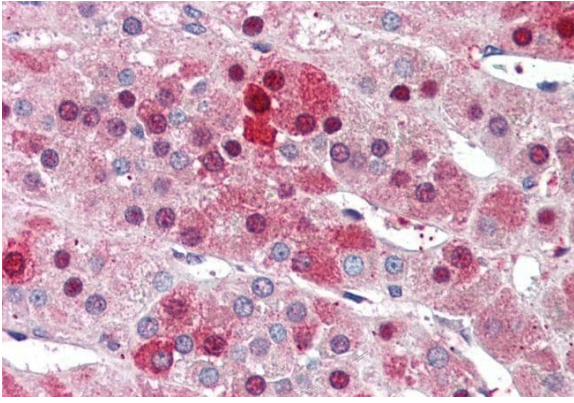
ARG63469 anti-HEC1 antibody WB image

Western Blot: HeLa lysate (RIPA buffer, 35 µg total protein per lane) stained with ARG63469 anti-HEC1 antibody at 0.5 µg/ml dilution.



ARG63469 anti-HEC1 antibody IHC-P image

Immunohistochemistry: Paraffin-embedded Human liver tissue. Antigen Retrieval: Steam tissue section in Citrate buffer (pH 6.0). The tissue section was stained with ARG63469 anti-HEC1 antibody at 5 µg/ml dilution followed by AP-staining.



ARG63469 anti-HEC1 antibody IHC-P image

Immunohistochemistry: Paraffin-embedded Human adrenal gland tissue. Antigen Retrieval: Steam tissue section in Citrate buffer (pH 6.0). The tissue section was stained with ARG63469 anti-HEC1 antibody at 5 $\mu\text{g}/\text{ml}$ dilution followed by AP-staining.