

ARG63451 anti-CAPZB antibody

Package: 100 µg
Store at: -20°C

Summary

Product Description	Goat Polyclonal antibody recognizes CAPZB
Tested Reactivity	Hu, Ms, Rat, Pig
Predict Reactivity	Cow, Dog
Tested Application	WB
Specificity	This antibody is expected to be specific for the beta2 isoform of capping protein, found in non-muscle cells and should not recognise the beta1 form.
Host	Goat
Clonality	Polyclonal
Isotype	IgG
Target Name	CAPZB
Species	Human
Immunogen	NDLVEALKRKQQC
Conjugation	Un-conjugated
Alternate Names	CapZ beta; F-actin-capping protein subunit beta; CAPZ; CAPB; CAPPB

Application Instructions

Application table	Application	Dilution
	WB	0.1 - 0.3 µg/ml
Application Note	WB: Recommend incubate at RT for 1h. * The dilutions indicate recommended starting dilutions and the optimal dilutions or concentrations should be determined by the scientist.	

Properties

Form	Liquid
Purification	Purified from goat serum by ammonium sulphate precipitation followed by antigen affinity chromatography using the immunizing peptide.
Buffer	Tris saline (pH 7.3), 0.02% Sodium azide and 0.5% BSA
Preservative	0.02% Sodium azide
Stabilizer	0.5% BSA
Concentration	0.5 mg/ml
Storage instruction	For continuous use, store undiluted antibody at 2-8°C for up to a week. For long-term storage, aliquot and store at -20°C or below. Storage in frost free freezers is not recommended. Avoid repeated freeze/thaw cycles. Suggest spin the vial prior to opening. The antibody solution should be gently mixed

before use.

Note

For laboratory research only, not for drug, diagnostic or other use.

Bioinformation

Background

This gene encodes the beta subunit of the barbed-end actin binding protein, which belongs to the F-actin capping protein family. The capping protein is a heterodimeric actin capping protein that blocks actin filament assembly and disassembly at the fast growing (barbed) filament ends and functions in regulating actin filament dynamics as well as in stabilizing actin filament lengths in muscle and nonmuscle cells. Multiple alternatively spliced transcript variants encoding different isoforms have been found.[provided by RefSeq, Apr 2011]

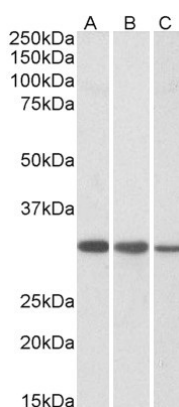
Research Area

Signaling Transduction antibody

Calculated Mw

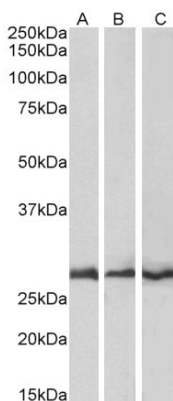
31 kDa

Images



ARG63451 anti-CAPZB antibody WB image

Western blot: 35 µg of Jurkat (A), HeLa (B) and NIH/3T3 (C) cell lysates (in RIPA buffer) stained with ARG63451 anti-CAPZB antibody at 0.01 µg/ml dilution and incubated at RT for 1 hour.



ARG63451 anti-CAPZB antibody WB image

Western blot: 35 µg of Mouse (A), Rat (B) and Pig (C) heart lysates (in RIPA buffer) stained with ARG63451 anti-CAPZB antibody at 0.1 µg/ml dilution and incubated at RT for 1 hour.