

ARG63449 anti-BCAP31 / BAP31 antibody

Package: 100 µg
Store at: -20°C

Summary

Product Description	Goat Polyclonal antibody recognizes BCAP31 / BAP31
Tested Reactivity	Hu
Predict Reactivity	Cow, Dog, Pig
Tested Application	IHC-P, WB
Specificity	This antibody is expected to recognise isoform a (NP_001132929.1) and isoform b (NP_005736.3; NP_001132913.1).
Host	Goat
Clonality	Polyclonal
Isotype	IgG
Target Name	BCAP31 / BAP31
Species	Human
Immunogen	C-QAAVDGPMDKKEE
Conjugation	Un-conjugated
Alternate Names	BAP31; Bap31; 6C6-AG; DXS1357E; CDM; BCR-associated protein 31; 6C6-AG tumor-associated antigen; p28; Protein CDM; B-cell receptor-associated protein 31; DDCH

Application Instructions

Application table	Application	Dilution
	IHC-P	3 - 5 µg/ml
	WB	1 - 3 µg/ml
Application Note	WB: Recommend incubate at RT for 1h. IHC-P: Antigen Retrieval: Steam tissue section in Citrate buffer (pH 6.0). * The dilutions indicate recommended starting dilutions and the optimal dilutions or concentrations should be determined by the scientist.	

Properties

Form	Liquid
Purification	Purified from goat serum by ammonium sulphate precipitation followed by antigen affinity chromatography using the immunizing peptide.
Buffer	Tris saline (pH 7.3), 0.02% Sodium azide and 0.5% BSA
Preservative	0.02% Sodium azide
Stabilizer	0.5% BSA
Concentration	0.5 mg/ml

Storage instruction	For continuous use, store undiluted antibody at 2-8°C for up to a week. For long-term storage, aliquot and store at -20°C or below. Storage in frost free freezers is not recommended. Avoid repeated freeze/thaw cycles. Suggest spin the vial prior to opening. The antibody solution should be gently mixed before use.
Note	For laboratory research only, not for drug, diagnostic or other use.

Bioinformation

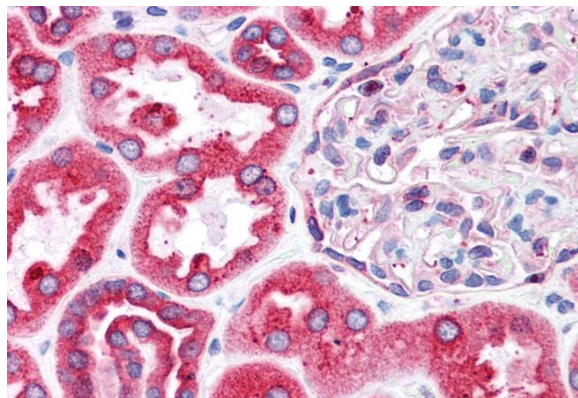
Database links	GeneID: 10134 Human Swiss-port # P51572 Human
Background	This gene encodes a member of the B-cell receptor associated protein 31 superfamily. The encoded protein is a multi-pass transmembrane protein of the endoplasmic reticulum that is involved in the anterograde transport of membrane proteins from the endoplasmic reticulum to the Golgi and in caspase 8-mediated apoptosis. Microdeletions in this gene are associated with contiguous ABCD1/DXS1375E deletion syndrome (CADD5), a neonatal disorder. Alternative splicing of this gene results in multiple transcript variants. Two related pseudogenes have been identified on chromosome 16. [provided by RefSeq, Jan 2012]
Research Area	Cell Biology and Cellular Response antibody; Cell Death antibody
Calculated Mw	28 kDa
PTM	Cleaved by CASP8 and other caspases.

Images



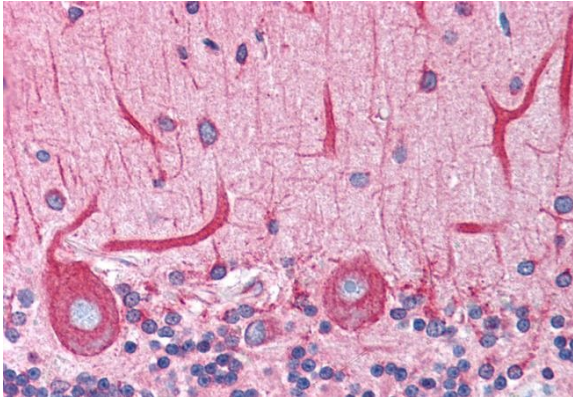
ARG63449 anti-BCAP31 / BAP31 antibody WB image

Western Blot: Human Breast lysate (35 µg protein in RIPA buffer) stained with ARG63449 anti-BCAP31 / BAP31 antibody at 0.1 µg/ml dilution.



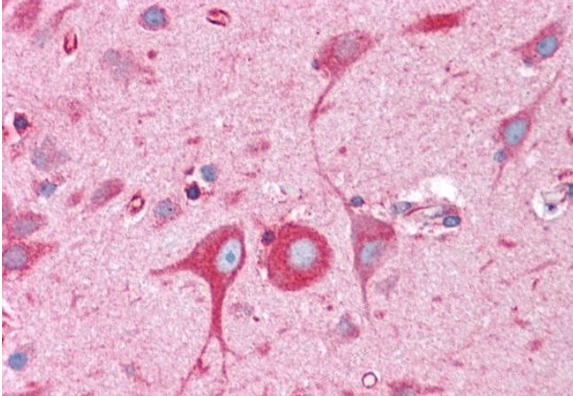
ARG63449 anti-BCAP31 / BAP31 antibody IHC-P image

Immunohistochemistry: Paraffin-embedded Human kidney tissue. Antigen Retrieval: Steam tissue section in Citrate buffer (pH 6.0). The tissue section was stained with ARG63449 anti-BCAP31 / BAP31 antibody at 3.75 µg/ml dilution followed by AP-staining.



ARG63449 anti-BCAP31 / BAP31 antibody IHC-P image

Immunohistochemistry: Paraffin-embedded Human cerebellum tissue. Antigen Retrieval: Steam tissue section in Citrate buffer (pH 6.0). The tissue section was stained with ARG63449 anti-BCAP31 / BAP31 antibody at 3.75 μ g/ml dilution followed by AP-staining.



ARG63449 anti-BCAP31 / BAP31 antibody IHC-P image

Immunohistochemistry: Paraffin-embedded Human cortex tissue. Antigen Retrieval: Steam tissue section in Citrate buffer (pH 6.0). The tissue section was stained with ARG63449 anti-BCAP31 / BAP31 antibody at 3.75 μ g/ml dilution followed by AP-staining.
