

## ARG63434 anti-P114-RHO-GEF / ARHGEF18 antibody

Package: 100 µg  
Store at: -20°C

### Summary

Product Description	Goat Polyclonal antibody recognizes P114-RHO-GEF / ARHGEF18
Tested Reactivity	Hu
Tested Application	WB
Specificity	This antibody is expected to recognize both reported isoforms (NP_056133.2; NP_001124427.1).
Host	Goat
Clonality	Polyclonal
Isotype	IgG
Target Name	P114-RHO-GEF / ARHGEF18
Species	Human
Immunogen	C-SAKEDASKEDVIFV
Conjugation	Un-conjugated
Alternate Names	114 kDa Rho-specific guanine nucleotide exchange factor; Septin-associated RhoGEF; SA-RhoGEF; p114RhoGEF; p114-Rho-GEF; Rho guanine nucleotide exchange factor 18; P114-RhoGEF

### Application Instructions

Application table	Application	Dilution
	WB	1 - 3 µg/ml

**Application Note**  
WB: Recommend incubate at RT for 1h.  
\* The dilutions indicate recommended starting dilutions and the optimal dilutions or concentrations should be determined by the scientist.

### Properties

Form	Liquid
Purification	Purified from goat serum by ammonium sulphate precipitation followed by antigen affinity chromatography using the immunizing peptide.
Buffer	Tris saline (pH 7.3), 0.02% Sodium azide and 0.5% BSA
Preservative	0.02% Sodium azide
Stabilizer	0.5% BSA
Concentration	0.5 mg/ml
Storage instruction	For continuous use, store undiluted antibody at 2-8°C for up to a week. For long-term storage, aliquot and store at -20°C or below. Storage in frost free freezers is not recommended. Avoid repeated freeze/thaw cycles. Suggest spin the vial prior to opening. The antibody solution should be gently mixed before use.

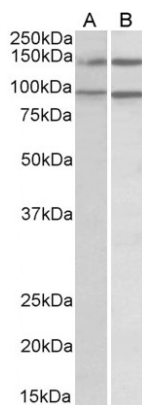
Note For laboratory research only, not for drug, diagnostic or other use.

## Bioinformation

---

Database links	<a href="#">GeneID: 23370 Human</a> <a href="#">Swiss-port # Q6ZSZ5 Human</a>
Background	Rho GTPases are GTP binding proteins that regulate a wide spectrum of cellular functions. These cellular processes include cytoskeletal rearrangements, gene transcription, cell growth and motility. Activation of Rho GTPases is under the direct control of guanine nucleotide exchange factors (GEFs). The protein encoded by this gene is a guanine nucleotide exchange factor and belongs to the Rho GTPase GFE family. Family members share a common feature, a Dbl (DH) homology domain followed by a pleckstrin (PH) homology domain. Alternatively spliced transcript variants encoding different isoforms have been identified. [provided by RefSeq, Oct 2008]
Research Area	Signaling Transduction antibody
Calculated Mw	152 kDa

## Images



ARG63434 anti-P114-RHO-GEF / ARHGEF18 antibody WB image

Western blot: 35 µg of Daudi (A) and Caco-2 (B) cell lysates (in RIPA buffer) stained with ARG63434 anti-P114-RHO-GEF / ARHGEF18 antibody at 0.5 µg/ml dilution and incubated at RT for 1 hour.