

ARG63430 anti-PITPN / PITP alpha antibody

Package: 100 µg
Store at: -20°C

Summary

Product Description	Goat Polyclonal antibody recognizes PITPN / PITP alpha
Tested Reactivity	Hu
Predict Reactivity	Ms, Rat, Cow, Dog
Tested Application	WB
Host	Goat
Clonality	Polyclonal
Isotype	IgG
Target Name	PITPN / PITP alpha
Species	Human
Immunogen	C-RQKDPVKGMTADD
Conjugation	Un-conjugated
Alternate Names	PI-TPalpha; PITPN; VIB1A; HEL-S-36; PtdIns transfer protein alpha; PI-TP-alpha; PtdInsTP alpha; Phosphatidylinositol transfer protein alpha isoform

Application Instructions

Application table	Application	Dilution
	WB	1 - 3 µg/ml

Application Note
WB: Recommend incubate at RT for 1h.
* The dilutions indicate recommended starting dilutions and the optimal dilutions or concentrations should be determined by the scientist.

Properties

Form	Liquid
Purification	Purified from goat serum by ammonium sulphate precipitation followed by antigen affinity chromatography using the immunizing peptide.
Buffer	Tris saline (pH 7.3), 0.02% Sodium azide and 0.5% BSA
Preservative	0.02% Sodium azide
Stabilizer	0.5% BSA
Concentration	0.5 mg/ml
Storage instruction	For continuous use, store undiluted antibody at 2-8°C for up to a week. For long-term storage, aliquot and store at -20°C or below. Storage in frost free freezers is not recommended. Avoid repeated freeze/thaw cycles. Suggest spin the vial prior to opening. The antibody solution should be gently mixed before use.

Note For laboratory research only, not for drug, diagnostic or other use.

Bioinformation

Database links [GeneID: 5306 Human](#)

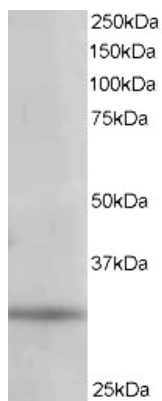
[Swiss-port # Q00169 Human](#)

Background This gene encodes a member of a family of lipid-binding proteins that transfer molecules of phosphatidylinositol or phosphatidylcholine between membrane surfaces. The protein is implicated in phospholipase C signaling and in the production of phosphatidylinositol 3,4,5-trisphosphate (PIP3) by phosphoinositide-3-kinase.[provided by RefSeq, Sep 2009]

Research Area Neuroscience antibody; Signaling Transduction antibody

Calculated Mw 32 kDa

Images



ARG63430 anti-PITPN / PITP alpha antibody WB image

Western Blot: 293 lysate (RIPA buffer, 35 µg total protein per lane) stained with ARG63430 anti-PITPN / PITP alpha antibody at 1 µg/ml dilution.