

ARG63345 anti-REV1L antibody

Package: 100 µg
Store at: -20°C

Summary

Product Description	Goat Polyclonal antibody recognizes REV1L
Tested Reactivity	Hu
Predict Reactivity	Ms, Rat, Cow, Dog
Tested Application	IHC-P
Specificity	This antibody is expected to recognise both reported isoforms.
Host	Goat
Clonality	Polyclonal
Isotype	IgG
Target Name	REV1L
Species	Human
Immunogen	C-VLQQTYGSTLKV
Conjugation	Un-conjugated
Alternate Names	EC 2.7.7.-; AIBP80; Rev1-like terminal deoxycytidyl transferase; Alpha integrin-binding protein 80; DNA repair protein REV1; REV1L

Application Instructions

Application table	Application	Dilution
	IHC-P	4 - 6 µg/ml
Application Note	IHC-P: Antigen Retrieval: Steam tissue section in Tris/EDTA buffer (pH 9.0). * The dilutions indicate recommended starting dilutions and the optimal dilutions or concentrations should be determined by the scientist.	

Properties

Form	Liquid
Purification	Purified from goat serum by ammonium sulphate precipitation followed by antigen affinity chromatography using the immunizing peptide.
Buffer	Tris saline (pH 7.3), 0.02% Sodium azide and 0.5% BSA
Preservative	0.02% Sodium azide
Stabilizer	0.5% BSA
Concentration	0.5 mg/ml
Storage instruction	For continuous use, store undiluted antibody at 2-8°C for up to a week. For long-term storage, aliquot and store at -20°C or below. Storage in frost free freezers is not recommended. Avoid repeated freeze/thaw cycles. Suggest spin the vial prior to opening. The antibody solution should be gently mixed

before use.

Note

For laboratory research only, not for drug, diagnostic or other use.

Bioinformation

Database links

[GeneID: 51455 Human](#)

[Swiss-port # Q9UBZ9 Human](#)

Background

This gene encodes a protein with similarity to the *S. cerevisiae* mutagenesis protein Rev1. The Rev1 proteins contain a BRCT domain, which is important in protein-protein interactions. A suggested role for the human Rev1-like protein is as a scaffold that recruits DNA polymerases involved in translesion synthesis (TLS) of damaged DNA. Two alternatively spliced transcript variants that encode different proteins have been found. [provided by RefSeq, Jul 2008]

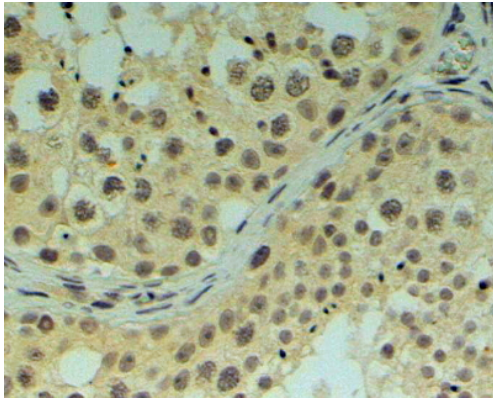
Research Area

Gene Regulation antibody

Calculated Mw

138 kDa

Images



ARG63345 anti-REV1L antibody IHC-P image

Immunohistochemistry: paraffin embedded Human Testis. (Steamed antigen retrieval with Tris/EDTA buffer pH 9) stained with ARG63345 anti-REV1L antibody at 4 µg/ml dilution followed by HRP-staining.