

ARG63316 anti-MTM1 antibody

Package: 100 µg
Store at: -20°C

Summary

Product Description	Goat Polyclonal antibody recognizes MTM1
Tested Reactivity	Hu, Ms
Predict Reactivity	Cow, Dog
Tested Application	IHC-P, WB
Host	Goat
Clonality	Polyclonal
Isotype	IgG
Target Name	MTM1
Species	Human
Immunogen	C-SSPSQMMPHVQTHF
Conjugation	Un-conjugated
Alternate Names	MTMX; Phosphatidylinositol-3,5-bisphosphate 3-phosphatase; XLMTM; EC 3.1.3.95; CNM; EC 3.1.3.64; Myotubularin; Phosphatidylinositol-3-phosphate phosphatase

Application Instructions

Application table	Application	Dilution
	IHC-P	10 µg/ml
	WB	1 - 3 µg/ml
Application Note	WB: Recommend incubate at RT for 1h. IHC-P: Antigen Retrieval: Steam tissue section in Citrate buffer (pH 6.0). * The dilutions indicate recommended starting dilutions and the optimal dilutions or concentrations should be determined by the scientist.	

Properties

Form	Liquid
Purification	Purified from goat serum by ammonium sulphate precipitation followed by antigen affinity chromatography using the immunizing peptide.
Buffer	Tris saline (pH 7.3), 0.02% Sodium azide and 0.5% BSA
Preservative	0.02% Sodium azide
Stabilizer	0.5% BSA
Concentration	0.5 mg/ml
Storage instruction	For continuous use, store undiluted antibody at 2-8°C for up to a week. For long-term storage, aliquot and store at -20°C or below. Storage in frost free freezers is not recommended. Avoid repeated

freeze/thaw cycles. Suggest spin the vial prior to opening. The antibody solution should be gently mixed before use.

Note

For laboratory research only, not for drug, diagnostic or other use.

Bioinformation

Database links

[GeneID: 17772 Mouse](#)

[GeneID: 4534 Human](#)

[Swiss-port # Q13496 Human](#)

[Swiss-port # Q9Z2C5 Mouse](#)

Background

This gene encodes a dual-specificity phosphatase that acts on both phosphotyrosine and phosphoserine. It is required for muscle cell differentiation and mutations in this gene have been identified as being responsible for X-linked myotubular myopathy. [provided by RefSeq, Jul 2008]

Research Area

Cell Biology and Cellular Response antibody; Developmental Biology antibody; Metabolism antibody; Signaling Transduction antibody

Calculated Mw

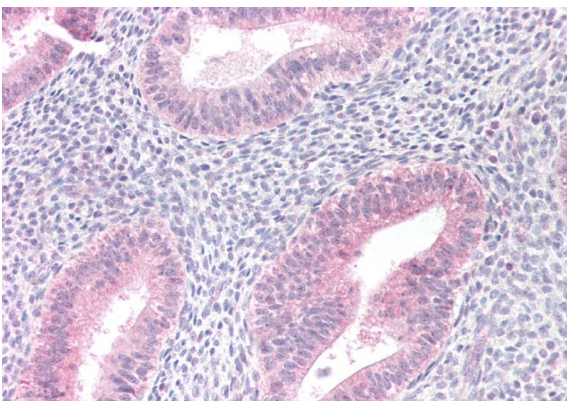
70 kDa

Images



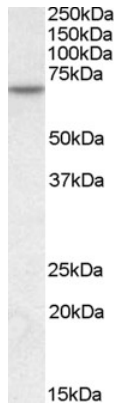
ARG63316 anti-MTM1 antibody WB image

Western Blot: HepG2 lysate (35 µg protein in RIPA buffer) stained with ARG63316 anti-MTM1 antibody at 0.3 µg/ml dilution.



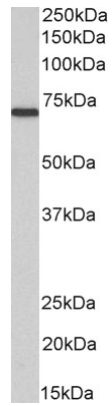
ARG63316 anti-MTM1 antibody IHC-P image

Immunohistochemistry: Paraffin-embedded Human uterus tissue. Antigen Retrieval: Steam tissue section in Citrate buffer (pH 6.0). The tissue section was stained with ARG63316 anti-MTM1 antibody at 10 µg/ml dilution followed by AP-staining.



ARG63316 anti-MTM1 antibody WB image

Western blot: 35 µg of Human skeletal muscle lysate (in RIPA buffer) stained with ARG63316 anti-MTM1 antibody at 1 µg/ml dilution and incubated at RT for 1 hour.



ARG63316 anti-MTM1 antibody WB image

Western blot: 35 µg of Mouse skeletal muscle lysate (in RIPA buffer) stained with ARG63316 anti-MTM1 antibody at 1 µg/ml dilution and incubated at RT for 1 hour.