

## ARG63311 anti-MPS1 / RPS27 antibody

Package: 100 µg  
Store at: -20°C

### Summary

Product Description	Goat Polyclonal antibody recognizes MPS1 / RPS27
Tested Reactivity	Hu
Predict Reactivity	Ms, Rat
Tested Application	IHC-P, WB
Host	Goat
Clonality	Polyclonal
Isotype	IgG
Target Name	MPS1 / RPS27
Species	Human
Immunogen	PLAKDLLHPSPEE-C
Conjugation	Un-conjugated
Alternate Names	Metallopan-stimulin 1; MPS-1; 40S ribosomal protein S27; S27; MPS1

### Application Instructions

Application table	Application	Dilution
	IHC-P	3 - 5 µg/ml
	WB	0.03 - 0.1 µg/ml

**Application Note**  
WB: Recommend incubate at RT for 1h.  
IHC-P: Antigen Retrieval: Steam tissue section in Citrate buffer (pH 6.0).  
\* The dilutions indicate recommended starting dilutions and the optimal dilutions or concentrations should be determined by the scientist.

### Properties

Form	Liquid
Purification	Purified from goat serum by ammonium sulphate precipitation followed by antigen affinity chromatography using the immunizing peptide.
Buffer	Tris saline (pH 7.3), 0.02% Sodium azide and 0.5% BSA
Preservative	0.02% Sodium azide
Stabilizer	0.5% BSA
Concentration	0.5 mg/ml
Storage instruction	For continuous use, store undiluted antibody at 2-8°C for up to a week. For long-term storage, aliquot and store at -20°C or below. Storage in frost free freezers is not recommended. Avoid repeated freeze/thaw cycles. Suggest spin the vial prior to opening. The antibody solution should be gently mixed

before use.

Note

For laboratory research only, not for drug, diagnostic or other use.

## Bioinformation

Database links

[GeneID: 6232 Human](#)

[Swiss-port # P42677 Human](#)

Background

Ribosomes, the organelles that catalyze protein synthesis, consist of a small 40S subunit and a large 60S subunit. Together these subunits are composed of 4 RNA species and approximately 80 structurally distinct proteins. This gene encodes a ribosomal protein that is a component of the 40S subunit. The protein belongs to the S27E family of ribosomal proteins. It contains a C4-type zinc finger domain that can bind to zinc. The encoded protein has been shown to be able to bind to nucleic acid. It is located in the cytoplasm as a ribosomal component, but it has also been detected in the nucleus. Studies in rat indicate that ribosomal protein S27 is located near ribosomal protein S18 in the 40S subunit and is covalently linked to translation initiation factor eIF3. As is typical for genes encoding ribosomal proteins, there are multiple processed pseudogenes of this gene dispersed through the genome. [provided by RefSeq, Jul 2008]

Research Area

Gene Regulation antibody

Calculated Mw

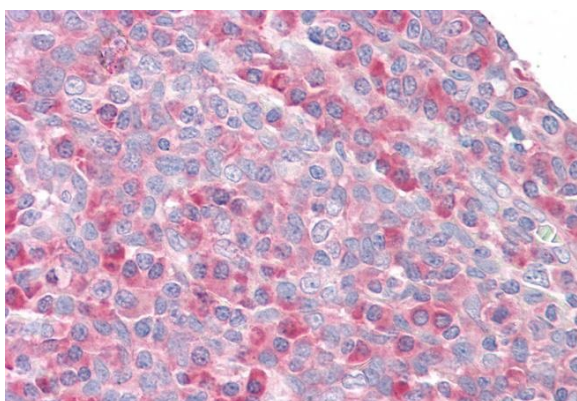
9 kDa

## Images



ARG63311 anti-MPS1 / RPS27 antibody WB image

Western Blot: Jurkat lysate (35 µg protein in RIPA buffer) stained with ARG63311 anti-MPS1 / RPS27 antibody at 0.03 µg/ml dilution.



ARG63311 anti-MPS1 / RPS27 antibody IHC-P image

Immunohistochemistry: Paraffin-embedded Human tonsil tissue. Antigen Retrieval: Steam tissue section in Citrate buffer (pH 6.0). The tissue section was stained with ARG63311 anti-MPS1 / RPS27 antibody at 3.75 µg/ml dilution followed by AP-staining.