

## ARG63305 anti-CARD6 antibody

Package: 100 µg  
Store at: -20°C

### Summary

|                     |  |
|---------------------|--|
| Product Description | Goat Polyclonal antibody recognizes CARD6                |
| Tested Reactivity   | Hu   |
| Tested Application  | IHC-P  |
| Host                | Goat   |
| Clonality           | Polyclonal   |
| Isotype             | IgG  |
| Target Name         | CARD6  |
| Species             | Human  |
| Immunogen           | ATESTPSEIIERER-C   |
| Conjugation         | Un-conjugated  |
| Alternate Names     | Caspase recruitment domain-containing protein 6; CINCIN1 |

### Application Instructions

| Application table | Application | Dilution     |
|-------------------|-------------|--------------|
|                   | IHC-P       | 5 - 10 µg/ml |

**Application Note** IHC-P: Antigen Retrieval: Steam tissue section in Citrate buffer (pH 6.0).  
\* The dilutions indicate recommended starting dilutions and the optimal dilutions or concentrations should be determined by the scientist.

### Properties

|                     |  |
|---------------------|--|
| Form                | Liquid   |
| Purification        | Purified from goat serum by ammonium sulphate precipitation followed by antigen affinity chromatography using the immunizing peptide.  |
| Buffer              | Tris saline (pH 7.3), 0.02% Sodium azide and 0.5% BSA  |
| Preservative        | 0.02% Sodium azide   |
| Stabilizer          | 0.5% BSA   |
| Concentration       | 0.5 mg/ml  |
| Storage instruction | For continuous use, store undiluted antibody at 2-8°C for up to a week. For long-term storage, aliquot and store at -20°C or below. Storage in frost free freezers is not recommended. Avoid repeated freeze/thaw cycles. Suggest spin the vial prior to opening. The antibody solution should be gently mixed before use. |
| Note                | For laboratory research only, not for drug, diagnostic or other use.   |

## Bioinformation

---

Database links

[GeneID: 84674 Human](#)

[Swiss-port # Q9BX69 Human](#)

Background

This gene encodes a protein that contains a caspase recruitment domain (CARD), an antiparallel six-helical bundle that mediates homotypic protein-protein interactions. The encoded protein is a microtubule-associated protein that has been shown to interact with receptor-interacting protein kinases and positively modulate signal transduction pathways converging on activation of the inducible transcription factor NF- $\kappa$ B. [provided by RefSeq, Jul 2008]

Research Area

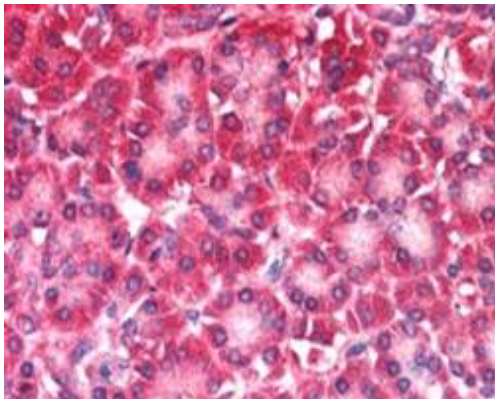
Cell Biology and Cellular Response antibody; Cell Death antibody

Calculated Mw

116 kDa

## Images

---



ARG63305 anti-CARD6 antibody IHC-P image

Immunohistochemistry: paraffin embedded Human Pancreas. (Steamed antigen retrieval with citrate buffer pH 6) stained with ARG63305 anti-CARD6 antibody at 5  $\mu$ g/ml dilution followed by AP-staining.