

ARG63295 anti-RNF13 / RZF antibody

Package: 100 µg
Store at: -20°C

Summary

Product Description	Goat Polyclonal antibody recognizes RNF13 / RZF
Tested Reactivity	Hu
Predict Reactivity	Ms, Rat, Cow, Dog, Pig
Tested Application	FACS, IHC, WB
Specificity	Reported variants represent identical protein (NP_009213.1; NP_899237.1).
Host	Goat
Clonality	Polyclonal
Isotype	IgG
Target Name	RNF13 / RZF
Species	Human
Immunogen	C-PNGERDYNIANTV
Conjugation	Un-conjugated
Alternate Names	RZF; E3 ubiquitin-protein ligase RNF13; RING finger protein 13; EC 6.3.2.-

Application Instructions

Application table	Application	Dilution
	FACS	10 µg/ml
	IHC	Assay - dependent
	WB	2 µg/ml
Application Note	WB: Recommend incubate at RT for 1h. * The dilutions indicate recommended starting dilutions and the optimal dilutions or concentrations should be determined by the scientist.	

Properties

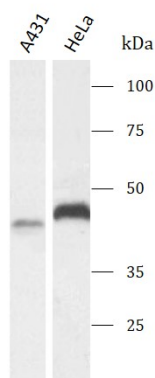
Form	Liquid
Purification	Purified from goat serum by ammonium sulphate precipitation followed by antigen affinity chromatography using the immunizing peptide.
Buffer	Tris saline (pH 7.3), 0.02% Sodium azide and 0.5% BSA
Preservative	0.02% Sodium azide
Stabilizer	0.5% BSA
Concentration	0.5 mg/ml

Storage instruction	For continuous use, store undiluted antibody at 2-8°C for up to a week. For long-term storage, aliquot and store at -20°C or below. Storage in frost free freezers is not recommended. Avoid repeated freeze/thaw cycles. Suggest spin the vial prior to opening. The antibody solution should be gently mixed before use.
Note	For laboratory research only, not for drug, diagnostic or other use.

Bioinformation

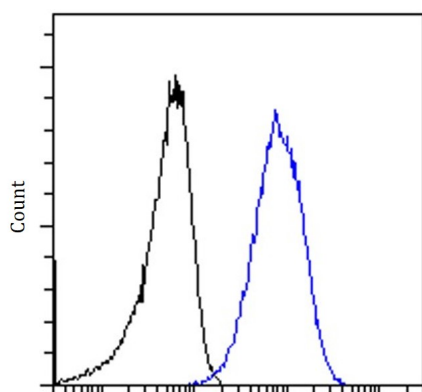
Database links	GeneID: 11342 Human Swiss-port # O43567 Human
Background	The protein encoded by this gene contains a RING zinc finger, a motif known to be involved in protein-protein interactions. The specific function of this gene has not yet been determined. Alternatively spliced transcript variants that encode the same protein have been reported. A pseudogene, which is also located on chromosome 3, has been defined for this gene. [provided by RefSeq, Jul 2008]
Research Area	Cell Biology and Cellular Response antibody
Calculated Mw	43 kDa
PTM	Auto-ubiquitinated.

Images



ARG63295 anti-RNF13 / RZF antibody WB image

Western blot: A431 and HeLa stained with ARG63295 anti-RNF13 / RZF antibody at 2µg/ml dilution.



ARG63295 anti-RNF13 / RZF antibody FACS image

Flow Cytometry: A431 stained with ARG63295 anti-RNF13 / RZF antibody at 10 µg/ml dilution.