

## ARG63292 anti-GERP / TRIM8 antibody

Package: 100 µg  
Store at: -20°C

### Summary

Product Description	Goat Polyclonal antibody recognizes GERP / TRIM8
Tested Reactivity	Hu
Predict Reactivity	Ms, Rat, Dog, Pig
Tested Application	FACS, ICC/IF, IHC-P
Host	Goat
Clonality	Polyclonal
Isotype	IgG
Target Name	GERP / TRIM8
Species	Human
Immunogen	C-YGQPSTKHYVTS
Conjugation	Un-conjugated
Alternate Names	EC 6.3.2.-; Probable E3 ubiquitin-protein ligase TRIM8; Glioblastoma-expressed RING finger protein; GERP; RING finger protein 27; RNF27; Tripartite motif-containing protein 8

### Application Instructions

Application table	Application	Dilution
	FACS	10 µg/ml
	ICC/IF	10 µg/ml
	IHC-P	4 - 6 µg/ml

**Application Note** IHC-P: Antigen Retrieval: Steam tissue section in Citrate buffer (pH 6.0).  
\* The dilutions indicate recommended starting dilutions and the optimal dilutions or concentrations should be determined by the scientist.

### Properties

Form	Liquid
Purification	Purified from goat serum by ammonium sulphate precipitation followed by antigen affinity chromatography using the immunizing peptide.
Buffer	Tris saline (pH 7.3), 0.02% Sodium azide and 0.5% BSA
Preservative	0.02% Sodium azide
Stabilizer	0.5% BSA
Concentration	0.5 mg/ml
Storage instruction	For continuous use, store undiluted antibody at 2-8°C for up to a week. For long-term storage, aliquot and store at -20°C or below. Storage in frost free freezers is not recommended. Avoid repeated

freeze/thaw cycles. Suggest spin the vial prior to opening. The antibody solution should be gently mixed before use.

Note

For laboratory research only, not for drug, diagnostic or other use.

## Bioinformation

---

Database links

[GeneID: 81603 Human](#)

[Swiss-port # Q9BZR9 Human](#)

Background

The protein encoded by this gene is a member of the tripartite motif (TRIM) family. The TRIM motif includes three zinc-binding domains, a RING, a B-box type 1 and a B-box type 2, and a coiled-coil region. This protein localizes to nuclear bodies. Its structure is similar to some tumor suppressor proteins and its gene maps to a locus thought to contain tumor suppressor genes. [provided by RefSeq, Jul 2008]

Research Area

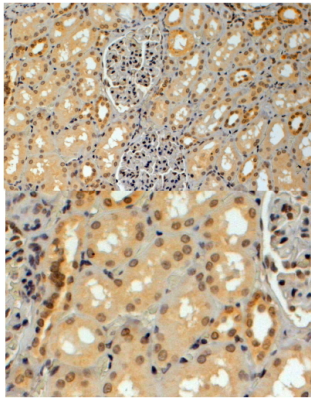
Cell Biology and Cellular Response antibody; Gene Regulation antibody

Calculated Mw

61 kDa

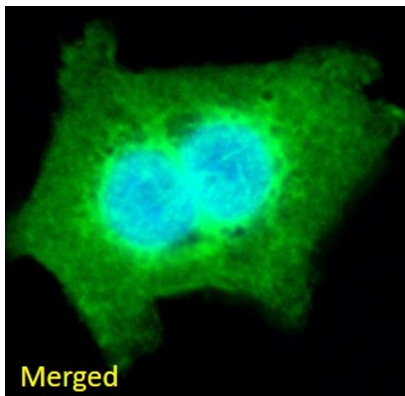
## Images

---



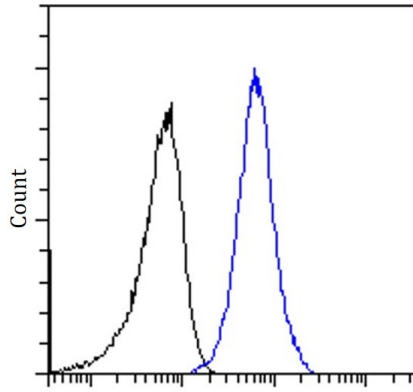
ARG63292 anti-GERP / TRIM8 antibody IHC-P image

Immunohistochemistry: paraffin embedded Human Kidney. (Steamed antigen retrieval with citrate buffer pH 6.0) stained with ARG63292 anti-GERP / TRIM8 antibody at 4 µg/ml dilution.



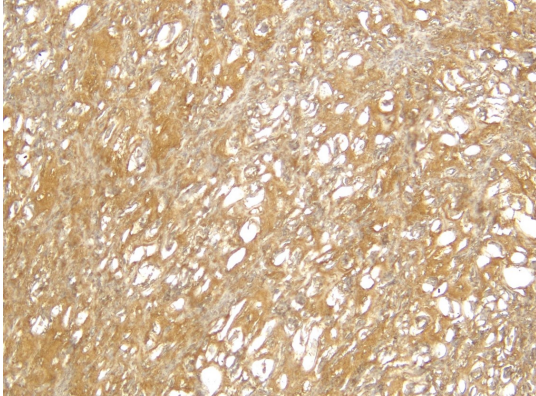
ARG63292 anti-GERP / TRIM8 antibody ICC/IF image

Immunofluorescence: A431 stained with ARG63292 anti-GERP / TRIM8 antibody at 10 µg/ml dilution.



ARG63292 anti-GERP / TRIM8 antibody FACS image

Flow Cytometry: A431 stained with ARG63292 anti-GERP / TRIM8 antibody at 10  $\mu$ g/ml dilution.



ARG63292 anti-GERP / TRIM8 antibody IHC-P image

Immunohistochemistry: Human Kidney stained with ARG63292 anti-GERP / TRIM8 antibody at 4  $\mu$ g/ml dilution.