

ARG63240 anti-GCIP interacting protein p29 antibody

Package: 100 µg
Store at: -20°C

Summary

Product Description	Goat Polyclonal antibody recognizes GCIP interacting protein p29
Tested Reactivity	Hu, Ms
Predict Reactivity	Cow, Rat, Dog
Tested Application	WB
Specificity	This antibody is expected to recognise both reported isoforms.
Host	Goat
Clonality	Polyclonal
Isotype	IgG
Target Name	GCIP interacting protein p29
Species	Human
Immunogen	C-AEIKQNLERGTAV
Conjugation	Un-conjugated
Alternate Names	CBPIN; P29; Pre-mRNA-splicing factor SYF2; fSAP29; p29; CCNDBP1-interactor; NTC31

Application Instructions

Application table	Application	Dilution
	WB	0.5 - 3 µg/ml

Application Note
WB: Recommend incubate at RT for 1h.
* The dilutions indicate recommended starting dilutions and the optimal dilutions or concentrations should be determined by the scientist.

Properties

Form	Liquid
Purification	Purified from goat serum by ammonium sulphate precipitation followed by antigen affinity chromatography using the immunizing peptide.
Buffer	Tris saline (pH 7.3), 0.02% Sodium azide and 0.5% BSA
Preservative	0.02% Sodium azide
Stabilizer	0.5% BSA
Concentration	0.5 mg/ml
Storage instruction	For continuous use, store undiluted antibody at 2-8°C for up to a week. For long-term storage, aliquot and store at -20°C or below. Storage in frost free freezers is not recommended. Avoid repeated freeze/thaw cycles. Suggest spin the vial prior to opening. The antibody solution should be gently mixed before use.

Note For laboratory research only, not for drug, diagnostic or other use.

Bioinformation

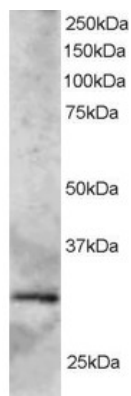
Database links [GeneID: 25949 Human](#)
[GeneID: 68592 Mouse](#)
[Swiss-port # O95926 Human](#)
[Swiss-port # Q9D198 Mouse](#)

Background This gene encodes a nuclear protein that interacts with cyclin D-type binding-protein 1, which is thought to be a cell cycle regulator at the G1/S transition. Alternate transcriptional splice variants, encoding different isoforms, have been characterized. [provided by RefSeq, Jul 2008]

Research Area Cell Biology and Cellular Response antibody; Gene Regulation antibody

Calculated Mw 29 kDa

Images



ARG63240 anti-GCIP interacting protein p29 antibody WB image

Western blot: Human Heart lysate (RIPA buffer, 35 µg total protein per lane) stained with ARG63240 anti-GCIP interacting protein p29 antibody at 2 µg/ml dilution.