

ARG63238 anti-TBPL1 / TLF / TRF2 antibody

Package: 100 µg
Store at: -20°C

Summary

Product Description	Goat Polyclonal antibody recognizes TBPL1 / TLF / TRF2
Tested Reactivity	Hu
Predict Reactivity	Ms, Rat, Cow, Dog
Tested Application	WB
Host	Goat
Clonality	Polyclonal
Isotype	IgG
Target Name	TBPL1 / TLF / TRF2
Species	Human
Immunogen	C-QIYPFVFESRKEIL
Conjugation	Un-conjugated
Alternate Names	TBP-related protein; TLP; TBP-like protein 1; MGC:9620; MGC:8389; TBP-related factor 2; TATA box-binding protein-related factor 2; Second TBP of unique DNA protein; TRF2; TLF; STUD; 21 kDa TBP-like protein; TBP-like factor; TATA box-binding protein-like protein 1

Application Instructions

Application table	Application	Dilution
	WB	1 - 3 µg/ml
Application Note	WB: Recommend incubate at RT for 1h. * The dilutions indicate recommended starting dilutions and the optimal dilutions or concentrations should be determined by the scientist.	

Properties

Form	Liquid
Purification	Purified from goat serum by ammonium sulphate precipitation followed by antigen affinity chromatography using the immunizing peptide.
Buffer	Tris saline (pH 7.3), 0.02% Sodium azide and 0.5% BSA
Preservative	0.02% Sodium azide
Stabilizer	0.5% BSA
Concentration	0.5 mg/ml
Storage instruction	For continuous use, store undiluted antibody at 2-8°C for up to a week. For long-term storage, aliquot and store at -20°C or below. Storage in frost free freezers is not recommended. Avoid repeated freeze/thaw cycles. Suggest spin the vial prior to opening. The antibody solution should be gently mixed before use.

Note For laboratory research only, not for drug, diagnostic or other use.

Bioinformation

Database links [GeneID: 9519 Human](#)

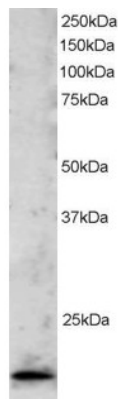
[Swiss-port # P62380 Human](#)

Background This gene encodes a member of the TATA box-binding protein family. TATA box-binding proteins play a critical role in transcription by RNA polymerase II as components of the transcription factor IID (TFIID) complex. The encoded protein does not bind to the TATA box and initiates transcription from TATA-less promoters. This gene plays a critical role in spermatogenesis, and single nucleotide polymorphisms in this gene may be associated with male infertility. Alternatively spliced transcript variants have been observed for this gene, and a pseudogene of this gene is located on the long arm of chromosome 3. [provided by RefSeq, Nov 2011]

Research Area Gene Regulation antibody

Calculated Mw 21 kDa

Images



ARG63238 anti-TBPL1 / TLF / TRF2 antibody WB image

Western Blot: Jurkat lysate (RIPA buffer, 30µg total protein per lane) stained with ARG63238 anti-TLP antibody at 2 µg/ml dilution.